

# \$66,900 - 203 59536 Range Rd 132a, Rural Smoky Lake County

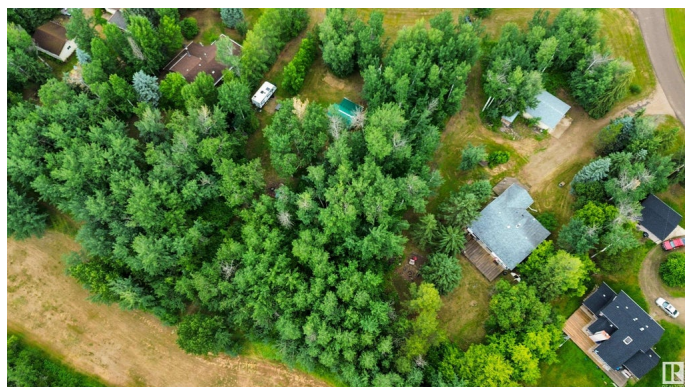
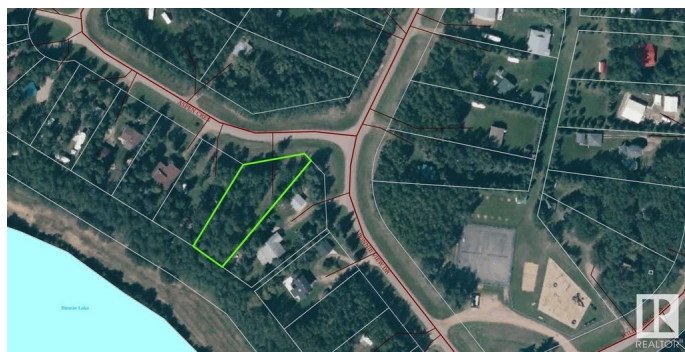
MLS® #E4397643

**\$66,900**

0 Bedroom, 0.00 Bathroom,  
Rural on 0.68 Acres

Bonnie Lake Resort, Rural Smoky Lake  
County, AB

Welcome to Bonnie Lake Resort, where endless possibilities await on this 0.68 acre treed lot, perfect for creating your own private getaway. This spacious lot offers ample room for parking your RV or constructing your dream lake cottage. Enjoy the convenience of being within walking distance to a playground, tennis, and basketball courts. For the outdoor enthusiasts, Vilna Golf Course, quad trails, and a boat launch are just a stone's throw away. Located just a short drive from Smoky Lake to the west, St. Paul to the east, and Edmonton only 1 hour and 48 minutes away, this property offers the perfect blend of tranquility and accessibility for your recreational needs.



## Essential Information

MLS® #	E4397643
Price	\$66,900
Bathrooms	0.00
Acres	0.68
Type	Rural
Sub-Type	Vacant Lot/Land
Status	Active

## Community Information

Address	203 59536 Range Rd 132a
Area	Rural Smoky Lake County
Subdivision	Bonnie Lake Resort
City	Rural Smoky Lake County
County	ALBERTA
Province	AB
Postal Code	T0A 3L0

### Exterior

Exterior Features	Backs Onto Park/Trees, Beach Access, Boating, Golf Nearby, Lake Access Property, Paved Lane, Picnic Area, Playground Nearby, Private Setting, Recreation Use, Treed Lot
-------------------	---

### Additional Information

Date Listed	July 15th, 2024
Days on Market	387
Zoning	Zone 60

DATA IS DEEMED RELIABLE BUT IS NOT GUARANTEED ACCURATE BY THE REALTORS® ASSOCIATION OF EDMONTON. COPYRIGHT 2025 BY THE REALTORS® ASSOCIATION OF EDMONTON. ALL RIGHTS RESERVED. Trademarks are owned or controlled by the Canadian Real Estate Association (CREA) and identify real estate professionals who are members of CREA (REALTOR®, REALTORS®) and/or the quality of services they provide (MLS®, Multiple Listing Service®)

Listing information last updated on August 6th, 2025 at 3:02pm MDT