

\$1,710,000 - 14 Westwind Drive, Spruce Grove

MLS® #E4399382

\$1,710,000

0 Bedroom, 0.00 Bathroom,
Land Commercial on 0.00 Acres

None, Spruce Grove, AB

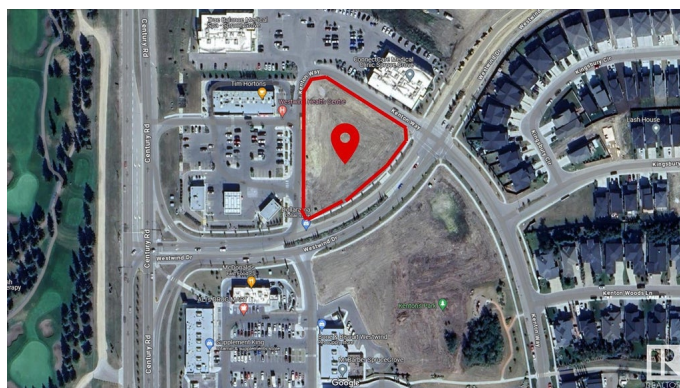
1.8 (+/-) acre development opportunity at Westwind Centre! Located just a 10 minute drive from West Edmonton at the intersection of Highway 16 and Century Road. excellent exposure with approximately 55,000 vehicles passing per day. Westwind Centre is a major commercial destination and serves as the hub for a variety of uses including retail, person and professional services and restaurants. Nearby amenities include Tim Hortons, No Frills, McDonalds, Westwind Health Centre, pharmacy, daycare and barber. Zoned C2

Essential Information

MLS® #	E4399382
Price	\$1,710,000
Bathrooms	0.00
Acres	0.00
Type	Land Commercial
Status	Active

Community Information

Address	14 Westwind Drive
Area	Spruce Grove
Subdivision	None
City	Spruce Grove
County	ALBERTA
Province	AB



Postal Code T7X 0V6

Additional Information

Date Listed July 25th, 2024

Days on Market 339

Zoning Zone 91

DATA IS DEEMED RELIABLE BUT IS NOT GUARANTEED ACCURATE BY THE REALTORS® ASSOCIATION OF EDMONTON. COPYRIGHT 2025 BY THE REALTORS® ASSOCIATION OF EDMONTON. ALL RIGHTS RESERVED.Trademarks are owned or controlled by the Canadian Real Estate Association (CREA) and identify real estate professionals who are members of CREA (REALTOR®, REALTORS®) and/or the quality of services they provide (MLS®, Multiple Listing Service®)

Listing information last updated on June 29th, 2025 at 7:17am MDT