

## \$59,900 - 4831 52 Avenue, Tofield

MLS® #E4400214

**\$59,900**

0 Bedroom, 0.00 Bathroom,  
Single Family on 0.00 Acres

Tofield, Tofield, AB

100' x 150' vacant, fully serviced lot with back alley access in the community of Tofield. Zoned residential- low density which allows for single family home or a duplex. \*\*Town of Tofield offers residential tax rebate for new builds! Excellent location- walking distance to all downtown amenities. Great building opportunity!

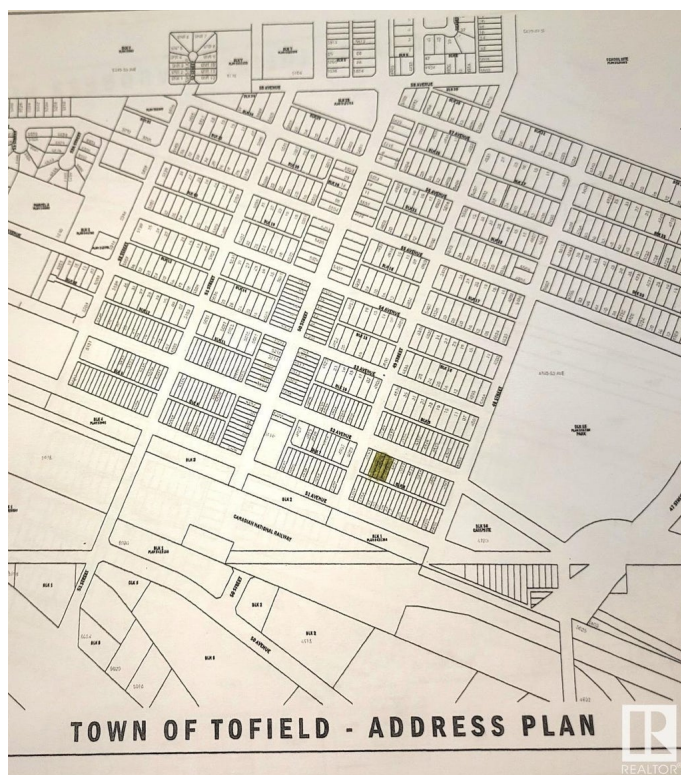
### Essential Information

|           |                 |
|-----------|-----------------|
| MLS® #    | E4400214        |
| Price     | \$59,900        |
| Bathrooms | 0.00            |
| Acres     | 0.00            |
| Type      | Single Family   |
| Sub-Type  | Vacant Lot/Land |
| Status    | Active          |

### Community Information

|             |                |
|-------------|----------------|
| Address     | 4831 52 Avenue |
| Area        | Tofield        |
| Subdivision | Tofield        |
| City        | Tofield        |
| County      | ALBERTA        |
| Province    | AB             |
| Postal Code | T0B 4J0        |

### Exterior



Exterior Features    Back Lane, Flat Site, Shopping Nearby, See Remarks

**School Information**

|            |                |
|------------|----------------|
| Elementary | C.W.Sears(K-4) |
| Middle     | Tofield(5-9)   |
| High       | Tofield        |

**Additional Information**

|                |                  |
|----------------|------------------|
| Date Listed    | August 1st, 2024 |
| Days on Market | 284              |
| Zoning         | Zone 80          |

DATA IS DEEMED RELIABLE BUT IS NOT GUARANTEED ACCURATE BY THE REALTORS® ASSOCIATION OF EDMONTON. COPYRIGHT 2025 BY THE REALTORS® ASSOCIATION OF EDMONTON. ALL RIGHTS RESERVED.Trademarks are owned or controlled by the Canadian Real Estate Association (CREA) and identify real estate professionals who are members of CREA (REALTOR®, REALTORS®) and/or the quality of services they provide (MLS®, Multiple Listing Service®)

Listing information last updated on May 12th, 2025 at 8:17pm MDT