

\$89,500 - Hwy 15 Rrd 185, Rural Lamont County

MLS® #E4413434

\$89,500

0 Bedroom, 0.00 Bathroom,
Rural on 21.00 Acres

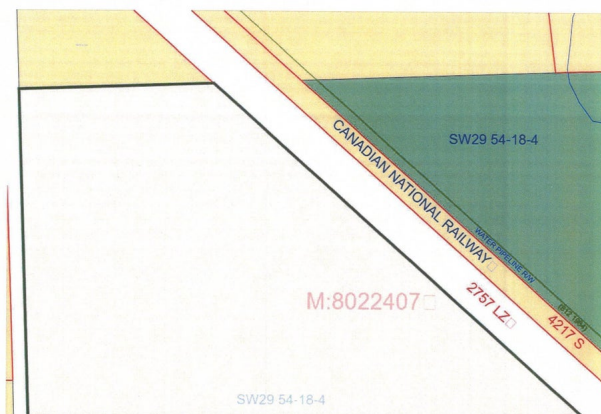
None, Rural Lamont County, AB

21 Acres with Highway and potential access to City Water. Property located 1/4 mile East of the Village of Chipman along Highway 15. Combination of crop & Treed areas property even has a creek on the north boundary of this acreage. Build your dream home or expand grazing land for your herd.



Essential Information

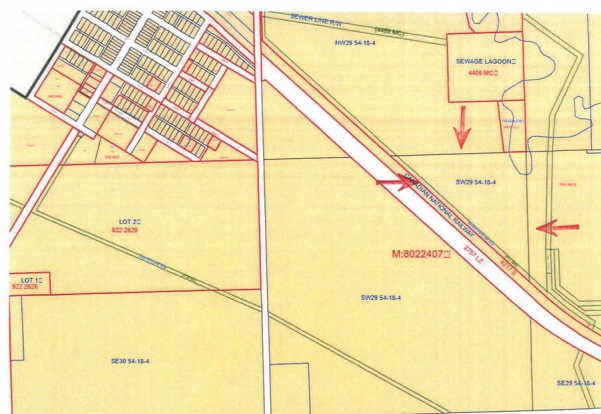
MLS® #	E4413434
Price	\$89,500
Bathrooms	0.00
Acres	21.00
Type	Rural
Sub-Type	Vacant Lot/Land
Status	Active



Community Information

Address	Hwy 15 Rrd 185
Area	Rural Lamont County
Subdivision	None
City	Rural Lamont County
County	ALBERTA
Province	AB
Postal Code	T0B 0W0

Exterior



Exterior Features Private Setting

Additional Information

Date Listed November 9th, 2024

Days on Market 211

Zoning Zone 60

DATA IS DEEMED RELIABLE BUT IS NOT GUARANTEED ACCURATE BY THE REALTORS® ASSOCIATION OF EDMONTON. COPYRIGHT 2025 BY THE REALTORS® ASSOCIATION OF EDMONTON. ALL RIGHTS RESERVED.Trademarks are owned or controlled by the Canadian Real Estate Association (CREA) and identify real estate professionals who are members of CREA (REALTOR®, REALTORS®) and/or the quality of services they provide (MLS®, Multiple Listing Service®)

Listing information last updated on June 8th, 2025 at 4:17pm MDT