

\$300,000 - S.5 E.5 Se, Rural Minburn County

MLS® #E4414144

\$300,000

0 Bedroom, 0.00 Bathroom,
Rural on 39.51 Acres

None, Rural Minburn County, AB

Bordering the town of Vegreville on county of Minburn land. Total of 39.5 acres of prime land ready for development. MASSIVE dugout.

Essential Information

MLS® #	E4414144
Price	\$300,000
Bathrooms	0.00
Acres	39.51
Type	Rural
Sub-Type	Vacant Lot/Land
Status	Active

Community Information

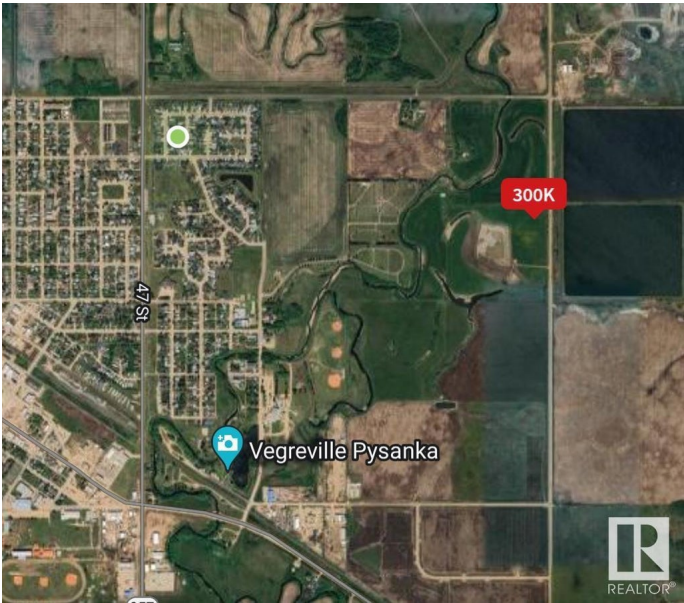
Address	S.5 E.5 Se
Area	Rural Minburn County
Subdivision	None
City	Rural Minburn County
County	ALBERTA
Province	AB
Postal Code	T0B 3B0

Exterior

Exterior Features See Remarks

Additional Information

Date Listed November 20th, 2024



Days on Market 252

Zoning Zone 60

DATA IS DEEMED RELIABLE BUT IS NOT GUARANTEED ACCURATE BY THE REALTORS® ASSOCIATION OF EDMONTON. COPYRIGHT 2025 BY THE REALTORS® ASSOCIATION OF EDMONTON. ALL RIGHTS RESERVED. Trademarks are owned or controlled by the Canadian Real Estate Association (CREA) and identify real estate professionals who are members of CREA (REALTOR®, REALTORS®) and/or the quality of services they provide (MLS®, Multiple Listing Service®)

Listing information last updated on July 30th, 2025 at 12:32pm MDT