

\$25,000 - 31 Crescent Drive, Fort Assiniboine

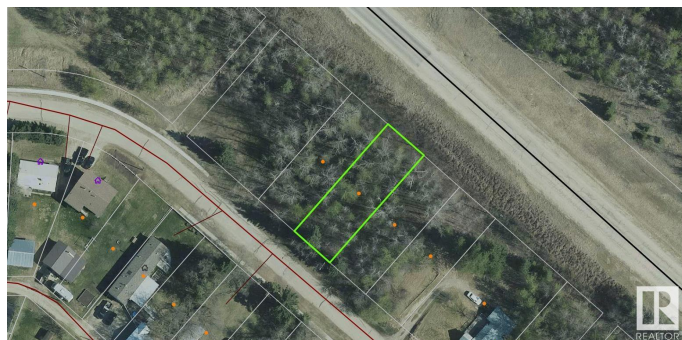
MLS® #E4420261

\$25,000

0 Bedroom, 0.00 Bathroom,
Single Family on 0.00 Acres

Fort Assiniboine, Fort Assiniboine, AB

31 Crescent Drive is a privately located lot along the edge of the story book community of Fort Assiniboine. Excellent opportunity whether building now or investment for the future. 2 additional attaching lots available for purchase allowing you to create a unique one of a kind sized estate. Fort Assiniboine is located along the north shore of the Athabasca River NW of Barrhead, AB and features a rich history being founded as a trading post by the Hudson's Bay Company and a stopping point along the Klondike Trail. Amazing surrounding natural areas, community school, modern hockey arena, curling rink rodeo grounds plus much more.



Essential Information

| | |
|-----------|-----------------|
| MLS® # | E4420261 |
| Price | \$25,000 |
| Bathrooms | 0.00 |
| Acres | 0.00 |
| Type | Single Family |
| Sub-Type | Vacant Lot/Land |
| Status | Active |

Community Information

| | |
|---------|-------------------|
| Address | 31 Crescent Drive |
| Area | Fort Assiniboine |

| | |
|-------------|------------------|
| Subdivision | Fort Assiniboine |
| City | Fort Assiniboine |
| County | ALBERTA |
| Province | AB |
| Postal Code | T0G 1A0 |

Exterior

Exterior Features Private Setting, See Remarks

Additional Information

| | |
|----------------|--------------------|
| Date Listed | February 4th, 2025 |
| Days on Market | 150 |
| Zoning | Zone 70 |

DATA IS DEEMED RELIABLE BUT IS NOT GUARANTEED ACCURATE BY THE REALTORS® ASSOCIATION OF EDMONTON. COPYRIGHT 2025 BY THE REALTORS® ASSOCIATION OF EDMONTON. ALL RIGHTS RESERVED. Trademarks are owned or controlled by the Canadian Real Estate Association (CREA) and identify real estate professionals who are members of CREA (REALTOR®, REALTORS®) and/or the quality of services they provide (MLS®, Multiple Listing Service®)

Listing information last updated on July 4th, 2025 at 1:17am MDT