

Courtesy Of Sam Killick Of ARIVL

\$439,000 - 203 9708 110 Street, Edmonton

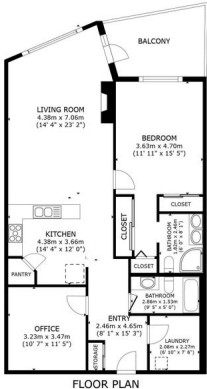
MLS® #E4422850

\$439,000

2 Bedroom, 2.00 Bathroom, 1,115 sqft
Condo / Townhouse on 0.00 Acres

Wā@hkwāntāwin, Edmonton, AB

RENOVATED, SAFE, SECURE & PRIVATE
â€“ THIS 2 BED (1+DEN), 2 BATH HOME IN
RIVERVIEW GREEN OFFERS STUNNING
HIGH LEVEL BRIDGE & RIVER VALLEY
VIEWS, PLUS UNDERGROUND PARKING &
STORAGE! Located in the heart of Grandin in
Wā@hkwāntāwin (formerly Oliver), close to
Downtown, this pet-friendly, well-managed
building offers exceptional convenience and
security. Best features include light-filled
southern exposure, 9-foot ceilings,
breathtaking views, a gas fireplace, electric
window coverings with variable shades, and a
balcony overlooking the park. Upgrades in the
last two years include luxury vinyl flooring,
fresh paint, new trim, updated bathrooms, Air
Conditioning, all-new appliances and a
refreshed kitchen with cabinet refacing & tile
backsplash. Premium amenities: gym, lounge,
meeting room, workshop, guest suite, heated
parking w/car wash, and heated storage.
Internet, heat & water included! A perfect
option for downsizing or city living-furniture can
be included! Move-in ready, donâ€™t miss this
rare opportunity!



#203-9708 110 ST
RIVERVIEW GREEN
WĦKWĦNTŦWIN, EDMONTON

GROSS INTERNAL AREA
FLOOR PLAN 100.00 m² (1,115 sq. ft.)
EXCLUDED AREAS - BALCONY 10.00 m² (111 sq. ft.)
TOTAL: 110.00 m² (1,186 sq. ft.)
SIZES AND DIMENSIONS ARE APPROXIMATE, ACTUAL MAY VARY

Built in 2000

Essential Information

MLS® # E4422850
Price \$439,000

Bedrooms	2
Bathrooms	2.00
Full Baths	2
Square Footage	1,115
Acres	0.00
Year Built	2000
Type	Condo / Townhouse
Sub-Type	Apartment High Rise
Style	Single Level Apartment
Status	Active

Community Information

Address	203 9708 110 Street
Area	Edmonton
Subdivision	W&hkw–win
City	Edmonton
County	ALBERTA
Province	AB
Postal Code	T5K 2W3

Amenities

Amenities	Air Conditioner, Car Wash, Ceiling 9 ft., Closet Organizers, Detectors Smoke, Exercise Room, Guest Suite, Intercom, Parking-Visitor, Party Room, Smart/Program. Thermostat, Secured Parking, Security Door, Sprinkler System-Fire, Storage-In-Suite, Storage-Locker Room, Workshop, HRV System, Rooftop Deck/Patio
Parking Spaces	1
Parking	Heated, Parkade, Stall, Underground

Interior

Interior Features	ensuite bathroom
Appliances	Air Conditioning-Central, Dishwasher-Built-In, Dryer, Garage Control, Microwave Hood Fan, Refrigerator, Stove-Electric, Washer, Window Coverings, TV Wall Mount, Curtains and Blinds
Heating	Fan Coil, Electric
Fireplace	Yes
Fireplaces	Mantel
# of Stories	16
Stories	1

Has Basement	Yes
Basement	None, No Basement

Exterior

Exterior	Concrete, Brick, Stucco
Exterior Features	Back Lane, Fenced, Golf Nearby, Landscaped, Low Maintenance Landscape, Public Transportation, River Valley View, River View, Schools, Shopping Nearby, View City, View Downtown
Roof	EPDM Membrane
Construction	Concrete, Brick, Stucco
Foundation	Concrete Perimeter

School Information

Elementary	W&hkw&nt&win
Middle	Westminster
High	Victoria

Additional Information

Date Listed	February 25th, 2025
Days on Market	121
Zoning	Zone 12
Condo Fee	\$867

DATA IS DEEMED RELIABLE BUT IS NOT GUARANTEED ACCURATE BY THE REALTORS® ASSOCIATION OF EDMONTON. COPYRIGHT 2025 BY THE REALTORS® ASSOCIATION OF EDMONTON. ALL RIGHTS RESERVED. Trademarks are owned or controlled by the Canadian Real Estate Association (CREA) and identify real estate professionals who are members of CREA (REALTOR®, REALTORS®) and/or the quality of services they provide (MLS®, Multiple Listing Service®)

Listing information last updated on June 25th, 2025 at 9:31pm MDT