

# \$660,000 - 34520 210 Range Road, Rural Stettler County

MLS® #E4423996

**\$660,000**

0 Bedroom, 0.00 Bathroom,  
Land Commercial on 0.00 Acres

Scollard, Rural Stettler County, AB

COURT ORDERED SALE. Corner Parcel: 159 acres $\hat{A}$ ± with exposure to Range Road 210.

Zoning: AG. Currently utilized as pasture.

Parcel: Includes gravel deposit areas.

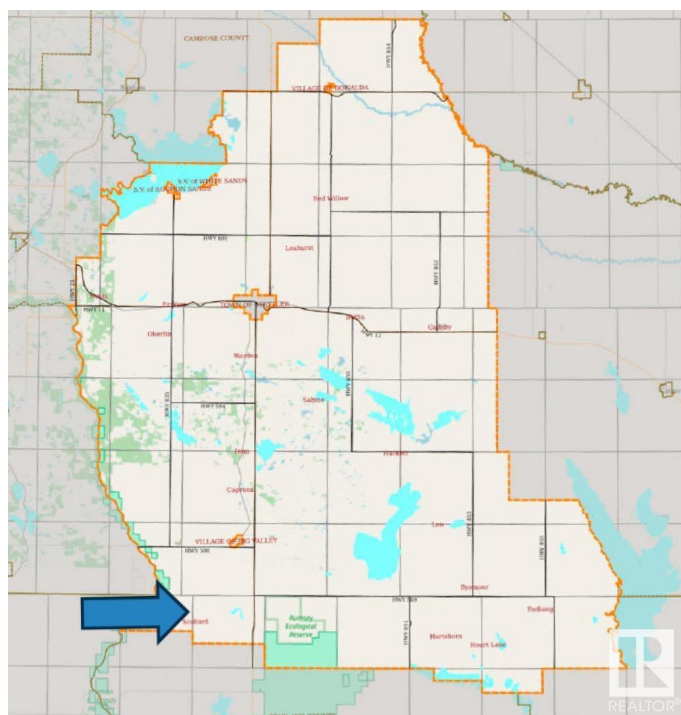
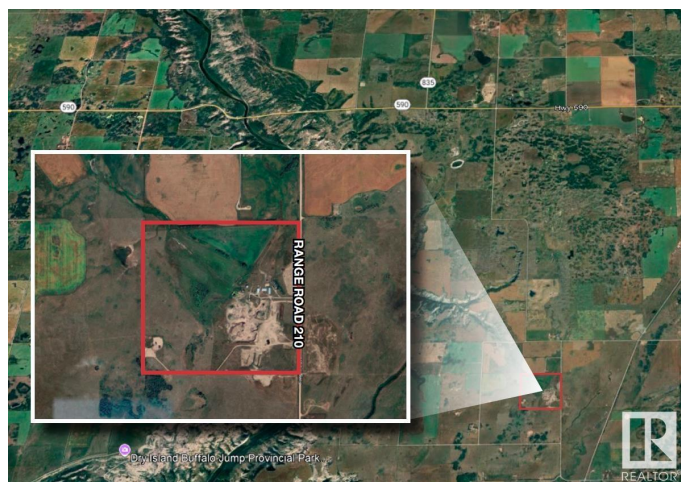
Location: Located within rural Stettler County along Range Road 210, between Township Roads 344A and 350, south of the Town of Stettler. Outbuildings: Shop: 2,400 sq.ft. $\hat{A}$ ± (40 $\hat{A}$ €™x60 $\hat{A}$ €™); Barn: 1,020 sq.ft. $\hat{A}$ ± (30 $\hat{A}$ €™x34 $\hat{A}$ €™); Quonset: 4,080 sq.ft. $\hat{A}$ ± (40 $\hat{A}$ €™x102 $\hat{A}$ €™).

## Essential Information

MLS® #	E4423996
Price	\$660,000
Bathrooms	0.00
Acres	0.00
Type	Land Commercial
Status	Active

## Community Information

Address	34520 210 Range Road
Area	Rural Stettler County
Subdivision	Scollard
City	Rural Stettler County
County	ALBERTA
Province	AB
Postal Code	T0J 0G0



**Exterior**

Exterior	Mixed
Construction	Mixed

**Additional Information**

Date Listed	March 5th, 2025
Days on Market	94
Zoning	Zone RUR6

DATA IS DEEMED RELIABLE BUT IS NOT GUARANTEED ACCURATE BY THE REALTORS® ASSOCIATION OF EDMONTON. COPYRIGHT 2025 BY THE REALTORS® ASSOCIATION OF EDMONTON. ALL RIGHTS RESERVED.Trademarks are owned or controlled by the Canadian Real Estate Association (CREA) and identify real estate professionals who are members of CREA (REALTOR®, REALTORS®) and/or the quality of services they provide (MLS®, Multiple Listing Service®)

Listing information last updated on June 7th, 2025 at 6:47pm MDT