

\$3,725,000 - W. Side Of 224 Half-mile South Of Yellowhead, Sherwood Park

MLS® #E4427420

\$3,725,000

0 Bedroom, 0.00 Bathroom,
Land Commercial on 0.00 Acres

None, Sherwood Park, AB

- Near New areas of Cambrian and Bremner will reshape this area with massive potential for this site!! - Trunk Lines for Sanitary & Water are Nearby ! - 4 Miles East of Sherwood Park !
- Great for Business/Industrial Site !

Essential Information

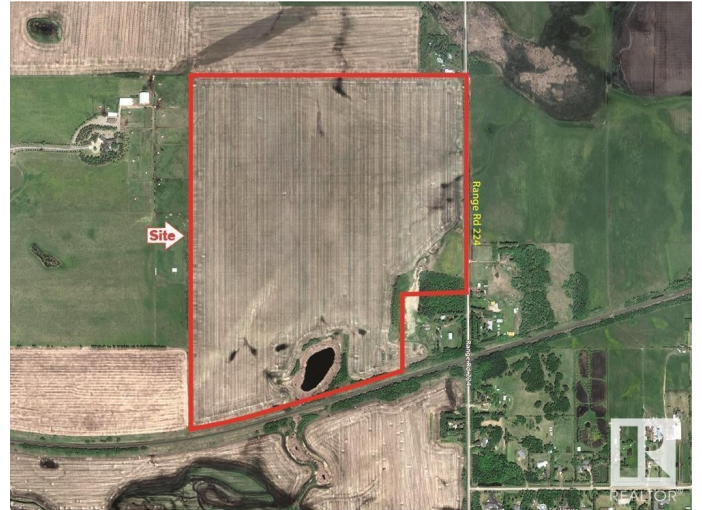
MLS® #	E4427420
Price	\$3,725,000
Bathrooms	0.00
Acres	0.00
Type	Land Commercial
Status	Active

Community Information

Address	W. Side Of 224 Half-mile South
Area	Sherwood Park
Subdivision	None
City	Sherwood Park
County	ALBERTA
Province	AB
Postal Code	T8E 2K4

Additional Information

Date Listed	March 24th, 2025
Days on Market	125



Zoning

Zone 25

DATA IS DEEMED RELIABLE BUT IS NOT GUARANTEED ACCURATE BY THE REALTORS® ASSOCIATION OF EDMONTON. COPYRIGHT 2025 BY THE REALTORS® ASSOCIATION OF EDMONTON. ALL RIGHTS RESERVED. Trademarks are owned or controlled by the Canadian Real Estate Association (CREA) and identify real estate professionals who are members of CREA (REALTOR®, REALTORS®) and/or the quality of services they provide (MLS®, Multiple Listing Service®)

Listing information last updated on July 27th, 2025 at 9:17am MDT