

\$149,900 - 160 50528 Rr 120, Rural Minburn County

MLS® #E4427940

\$149,900

3 Bedroom, 1.00 Bathroom, 1,184 sqft

Rural on 0.17 Acres

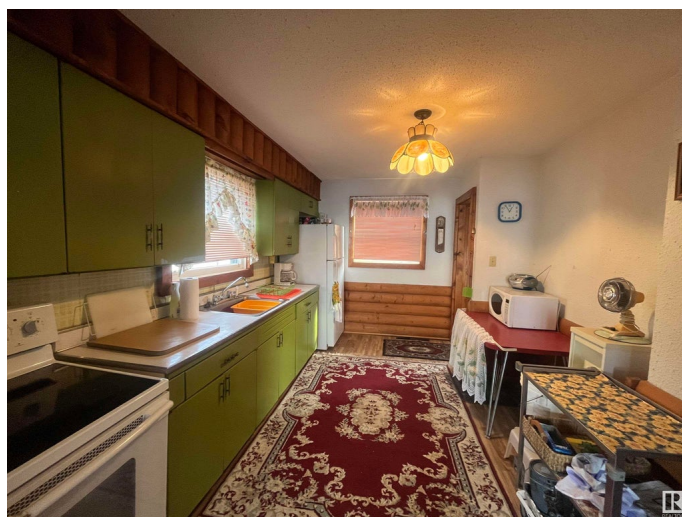
None, Rural Minburn County, AB

Enjoy the sunsets on the lake and your very own private beach on this waterfront property! Great summer getaway with this 1184 sq ft 3 bedroom 1.5 story. Full west facing deck to enjoy the beach from. Exterior has been recently painted, newer flooring throughout main floor. Property has its own well (recently serviced) plus a separate RV plug and ample parking for an RV or other vehicles. Great property to spend the summers at, plus wonderful skidooing access to multiple lakes close by. An abundance of wildlife and natural habitat in the area. Great highway access, just off highway 16 and just over an hour to Edmonton, and 25 mins to Vegreville!

Built in 1956

Essential Information

MLS® #	E4427940
Price	\$149,900
Bedrooms	3
Bathrooms	1.00
Full Baths	1
Square Footage	1,184
Acres	0.17
Year Built	1956
Type	Rural
Sub-Type	Detached Single Family



Style	1 and Half Storey
Status	Active

Community Information

Address	160 50528 Rr 120
Area	Rural Minburn County
Subdivision	None
City	Rural Minburn County
County	ALBERTA
Province	AB
Postal Code	T0B 2G0

Amenities

Features	See Remarks
----------	-------------

Interior

Heating	Forced Air-1, Electric, Natural Gas
Stories	2
Has Basement	Yes
Basement	None, No Basement

Exterior

Exterior	Wood
Exterior Features	Backs Onto Lake, Lake View, Private Setting
Construction	Wood
Foundation	Concrete Perimeter, See Remarks

Additional Information

Date Listed	March 27th, 2025
Days on Market	123
Zoning	Zone 80

DATA IS DEEMED RELIABLE BUT IS NOT GUARANTEED ACCURATE BY THE REALTORS® ASSOCIATION OF EDMONTON. COPYRIGHT 2025 BY THE REALTORS® ASSOCIATION OF EDMONTON. ALL RIGHTS RESERVED. Trademarks are owned or controlled by the Canadian Real Estate Association (CREA) and identify real estate professionals who are members of CREA (REALTOR®, REALTORS®) and/or the quality of services they provide (MLS®, Multiple Listing Service®)

Listing information last updated on July 28th, 2025 at 9:48am MDT