

\$335,000 - N/A, Rural Yellowhead

MLS® #E4428930

\$335,000

1 Bedroom, 0.50 Bathroom, 734 sqft

Rural on 38.30 Acres

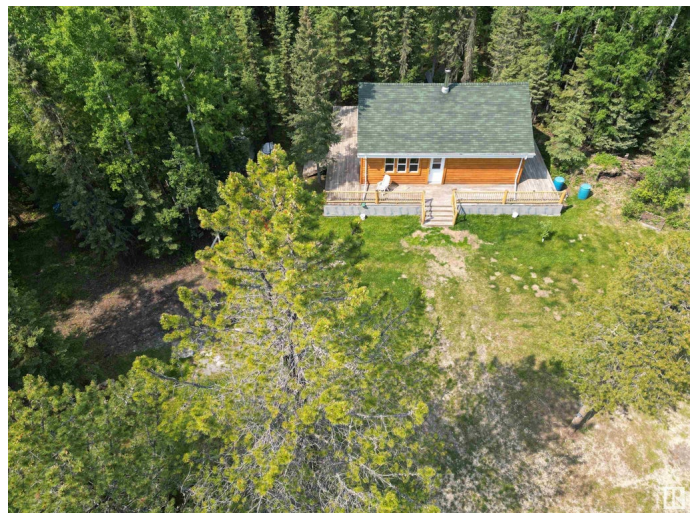
None, Rural Yellowhead, AB

This private 38+ acre property is surrounded by mature spruce, poplar, pine, birch, larch, apple and willow trees, plus wild raspberries, strawberries, and saskatoons is home to a stunning log house built in 2017. Unfinished - you can customize the space to your liking. The home features a cozy woodstove, a wraparound deck, beautiful log siding, and decorative log railings. Also included are a 40-foot C-can, two storage sheds, and additional building materials to complete interior. This exceptional property is located just off the pavement, less than an hour from Edmonton, under an hour from Edson, and only minutes from Chip Lake. Whether you're looking for a weekend getaway or a year-round retreat, this is the perfect place to unwind. Home is currently off-grid, services available at the road if desired. Want more land? We've got you covered. 2 titles. See E4414372 for cabin and 17 acres only. Game cameras on site!! Please follow posted signage.

Built in 2017

Essential Information

| | |
|----------|-----------|
| MLS® # | E4428930 |
| Price | \$335,000 |
| Bedrooms | 1 |



| | |
|----------------|------------------------|
| Bathrooms | 0.50 |
| Half Baths | 1 |
| Square Footage | 734 |
| Acres | 38.30 |
| Year Built | 2017 |
| Type | Rural |
| Sub-Type | Detached Single Family |
| Style | Bungalow |
| Status | Active |

Community Information

| | |
|-------------|------------------|
| Address | N/A |
| Area | Rural Yellowhead |
| Subdivision | None |
| City | Rural Yellowhead |
| County | ALBERTA |
| Province | AB |
| Postal Code | T0E 2M0 |

Amenities

| | |
|----------|---|
| Features | Off Street Parking, Ceiling 10 ft., Front Porch, R.V. Storage |
|----------|---|

Interior

| | |
|--------------|-------------------|
| Heating | Wood Stove, Wood |
| Stories | 1 |
| Has Basement | Yes |
| Basement | None, No Basement |

Exterior

| | |
|-------------------|--|
| Exterior | Wood |
| Exterior Features | Backs Onto Park/Trees, Fruit Trees/Shrubs, Low Maintenance Landscape, Private Setting, Treed Lot |
| Construction | Wood |
| Foundation | Piling |

Additional Information

| | |
|----------------|-----------------|
| Date Listed | April 3rd, 2025 |
| Days on Market | 117 |
| Zoning | Zone 70 |

DATA IS DEEMED RELIABLE BUT IS NOT GUARANTEED ACCURATE BY THE REALTORS® ASSOCIATION OF EDMONTON. COPYRIGHT 2025 BY THE REALTORS® ASSOCIATION OF EDMONTON. ALL RIGHTS RESERVED.Trademarks are owned or controlled by the Canadian Real Estate Association (CREA) and identify real estate professionals who are members of CREA (REALTOR®, REALTORS®) and/or the quality of services they provide (MLS®, Multiple Listing Service®)

Listing information last updated on July 29th, 2025 at 2:47am MDT