

\$178,900 - 801 56316 113, Rural St. Paul County

MLS® #E4430320

\$178,900

0 Bedroom, 0.00 Bathroom,
Rural on 1.37 Acres

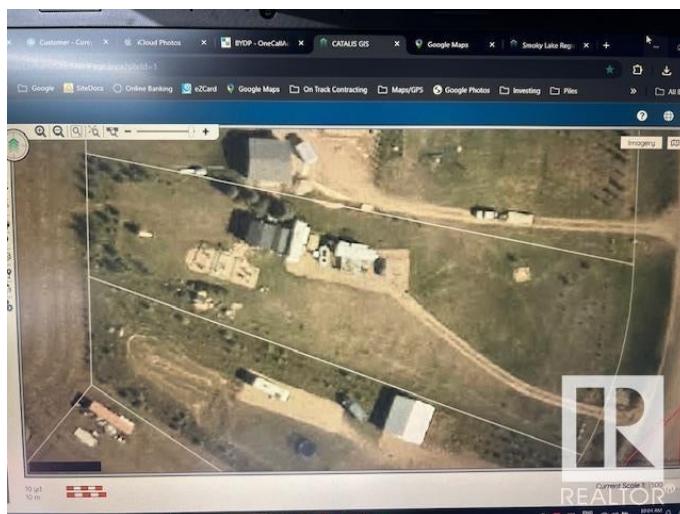
Lac Sante (St. Paul County), Rural St. Paul
County, AB

This stunning 1.37-acre lot in Sante Estates is the perfect retreat for weekend getaways or a future cottage with peek-a-boo lake views. Thoughtfully designed for convenience, the property is fully set up with power, sewer, and water, making it ideal for immediate enjoyment. A heated 16x16 shed provides a cozy space with a fridge and microwave, while an additional storage shed offers extra room for your outdoor gear. 5th wheel trailer, with permanent deck and with four power outlets and multiple sewer stubs, it's a fantastic opportunity to invite family and friends to bring their trailers for a weekend escape. The lot also features a 2000-gallon septic tank and a 2000-gallon cistern, ensuring reliable services. Power extends to the fire pit area, creating the perfect spot to gather and enjoy the peaceful surroundings.

Built in 2016

Essential Information

| | |
|------------|-----------|
| MLS® # | E4430320 |
| Price | \$178,900 |
| Bathrooms | 0.00 |
| Acres | 1.37 |
| Year Built | 2016 |
| Type | Rural |



| | |
|----------|-----------------|
| Sub-Type | Vacant Lot/Land |
| Status | Active |

Community Information

| | |
|-------------|-----------------------------|
| Address | 801 56316 113 |
| Area | Rural St. Paul County |
| Subdivision | Lac Sante (St. Paul County) |
| City | Rural St. Paul County |
| County | ALBERTA |
| Province | AB |
| Postal Code | T0A 3A0 |

Exterior

| | |
|-------------------|--|
| Exterior Features | Backs Onto Park/Trees, Lake Access Property, Lake View, Landscaped |
|-------------------|--|

Additional Information

| | |
|----------------|------------------|
| Date Listed | April 11th, 2025 |
| Days on Market | 59 |
| Zoning | Zone 60 |

DATA IS DEEMED RELIABLE BUT IS NOT GUARANTEED ACCURATE BY THE REALTORS® ASSOCIATION OF EDMONTON. COPYRIGHT 2025 BY THE REALTORS® ASSOCIATION OF EDMONTON. ALL RIGHTS RESERVED. Trademarks are owned or controlled by the Canadian Real Estate Association (CREA) and identify real estate professionals who are members of CREA (REALTOR®, REALTORS®) and/or the quality of services they provide (MLS®, Multiple Listing Service®)

Listing information last updated on June 9th, 2025 at 7:32pm MDT