

\$314,999 - 5411 47 Avenue, Wetaskiwin

MLS® #E4431806

\$314,999

5 Bedroom, 2.00 Bathroom, 1,221 sqft

Single Family on 0.00 Acres

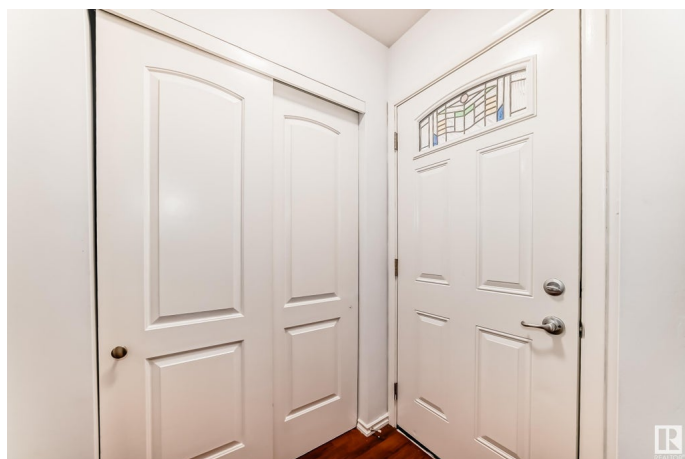
West Central (Wetaskiwin), Wetaskiwin, AB

Spacious Family Home with Suite Potential and Large Yard!!!!!! Welcome to this well-laid-out home offering a thoughtfully designed upper level featuring three comfortable bedrooms and a four-piece bathroom. The lower level includes two additional bedrooms, a three-piece bath, and excellent potential for a basement suite thanks to a separate entrance. "Recently upgraded kitchen and washrooms with modern finishes. Fresh new paint throughout the home gives it a bright, updated feelâ€”move-in ready! Step outside and enjoy a massive yard perfect for entertaining or relaxing, complete with mature trees. An attached single-car garage adds to the convenience. Whether you're looking for a family home or an income-generating property, this one checks all the boxes!

Built in 1959

Essential Information

MLS® #	E4431806
Price	\$314,999
Bedrooms	5
Bathrooms	2.00
Full Baths	2
Square Footage	1,221
Acres	0.00
Year Built	1959



Type	Single Family
Sub-Type	Detached Single Family
Style	Bungalow
Status	Active

Community Information

Address	5411 47 Avenue
Area	Wetaskiwin
Subdivision	West Central (Wetaskiwin)
City	Wetaskiwin
County	ALBERTA
Province	AB
Postal Code	T9A 0K9

Amenities

Amenities	Carbon Monoxide Detectors, Detectors Smoke, Gazebo, No Animal Home, No Smoking Home, See Remarks
Parking	Front Drive Access, Over Sized, Single Garage Attached

Interior

Appliances	Dishwasher-Built-In, Dryer, Stove-Electric, Washer, Window Coverings, See Remarks
Heating	Forced Air-1, Natural Gas
Stories	2
Has Basement	Yes
Basement	Full, Finished

Exterior

Exterior	Wood, Vinyl
Exterior Features	Fenced, Flat Site, Fruit Trees/Shrubs, Landscaped, Playground Nearby, Schools, Shopping Nearby, See Remarks
Roof	Asphalt Shingles
Construction	Wood, Vinyl
Foundation	Concrete Perimeter

Additional Information

Date Listed	April 19th, 2025
Days on Market	24
Zoning	Zone 80

DATA IS DEEMED RELIABLE BUT IS NOT GUARANTEED ACCURATE BY THE REALTORS® ASSOCIATION OF EDMONTON. COPYRIGHT 2025 BY THE REALTORS® ASSOCIATION OF EDMONTON. ALL RIGHTS RESERVED. Trademarks are owned or controlled by the Canadian Real Estate Association (CREA) and identify real estate professionals who are members of CREA (REALTOR®, REALTORS®) and/or the quality of services they provide (MLS®, Multiple Listing Service®)

Listing information last updated on May 14th, 2025 at 3:32am MDT