

Courtesy Of Kerri L Dechaine Of Dale Real Estate (St. Paul) Ltd.

\$404,900 - 58204 Range Road 101, Rural St. Paul County

MLS® #E4432268

\$404,900

4 Bedroom, 3.50 Bathroom, 2,180 sqft

Rural on 6.18 Acres

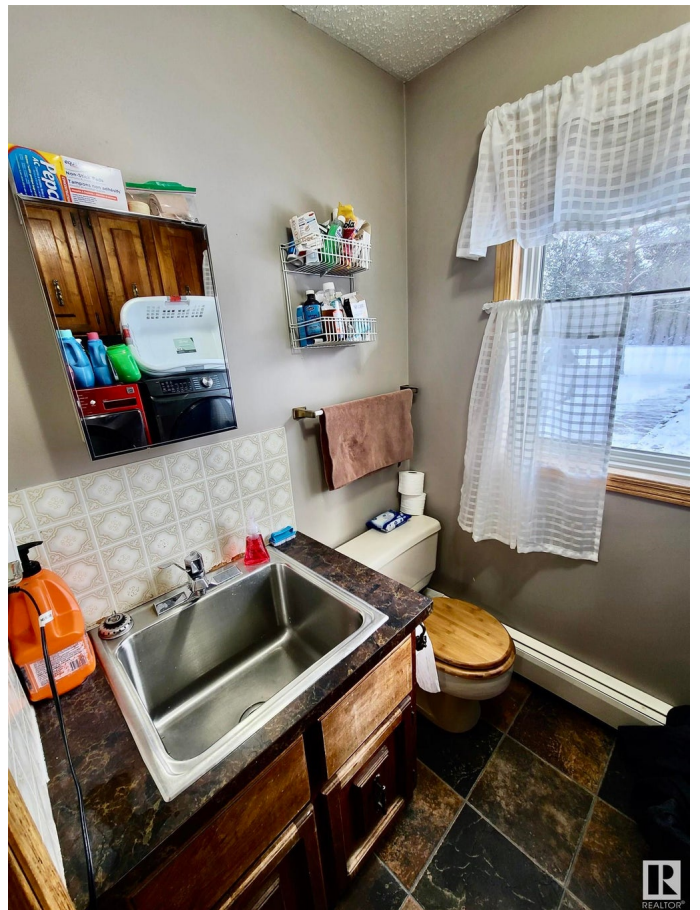
None, Rural St. Paul County, AB

"Spectacular Location" This outstanding acreage is only a mile north of the St.Paul Airport which is paved. The 6.18 acre property has a private setting with mature trees & plenty of garden space. The home spans over 2100sqft with a partially finished basement. The kitchen features walnut cabinetry complete with an island. There are two separate living rooms & a spacious dining room with ample storage. The main floor has 3 sizeable bedrooms plus 3 bathrooms & laundry room. The basement has in floor heat to keep you warm & cozy plus an additional bedroom & 3 pc. bathroom. The single attached garage is heated so it allows you to tinker comfortably. This property is the whole package & so much more.

Built in 1980

Essential Information

MLS® #	E4432268
Price	\$404,900
Bedrooms	4
Bathrooms	3.50
Full Baths	3
Half Baths	1
Square Footage	2,180



Acres	6.18
Year Built	1980
Type	Rural
Sub-Type	Detached Single Family
Style	Bungalow
Status	Active

Community Information

Address	58204 Range Road 101
Area	Rural St. Paul County
Subdivision	None
City	Rural St. Paul County
County	ALBERTA
Province	AB
Postal Code	T0A 3A0

Amenities

Features	Deck
----------	------

Interior

Interior Features	ensuite bathroom
Heating	Hot Water, In Floor Heat System, Natural Gas
Stories	1
Has Basement	Yes
Basement	Full, Partially Finished

Exterior

Exterior	Wood
Exterior Features	Flat Site, Landscaped, Level Land, Private Setting
Construction	Wood
Foundation	Concrete Perimeter

Additional Information

Date Listed	April 23rd, 2025
Days on Market	65
Zoning	Zone 60

DATA IS DEEMED RELIABLE BUT IS NOT GUARANTEED ACCURATE BY THE REALTORS® ASSOCIATION OF EDMONTON. COPYRIGHT 2025 BY THE REALTORS® ASSOCIATION OF EDMONTON. ALL RIGHTS RESERVED. Trademarks are owned or controlled by the Canadian Real Estate Association (CREA) and identify real estate professionals who are members of CREA (REALTOR®, REALTORS®) and/or the quality of services they

provide (MLS®®, Multiple Listing Service®®)
Listing information last updated on June 27th, 2025 at 7:47am MDT