

Courtesy Of Suzanne M Malo Of Homewise Realty

\$199,900 - 5109 50 Avenue, Vegreville

MLS® #E4432634

\$199,900

3 Bedroom, 2.00 Bathroom, 960 sqft

Single Family on 0.00 Acres

Vegreville, Vegreville, AB

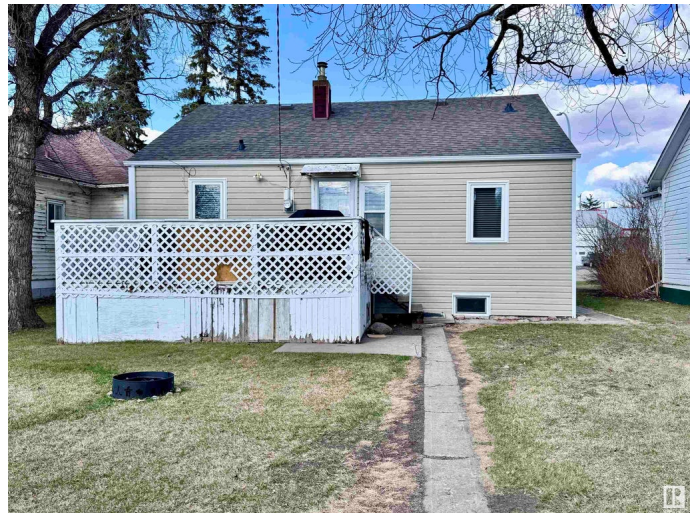
Discover this charming and well maintained 3-bedroom bungalow, situated along Highway 16A in the heart of Vegreville. The home welcomes you with a bright, open-concept layout that seamlessly blends a sunlit kitchenâ€™complete with an inviting eating barâ€™with a warm and cozy living room centered around a natural gas fireplace. New flooring flows throughout the main level, enhancing the fresh, modern feel. The primary bedroom offers both comfort and convenience, featuring a walk-in closet and built-in cabinetry. Downstairs, the partially finished basement provides a versatile space with a bathroom, additional bedroom, laundry area, and a generously sized rec roomâ€™perfect for gatherings or entertaining. Recent upgrades include new shingles, updated windows and siding, a 100-amp electrical panel, gutter guards, freshly painted interiors, renovated bathrooms, and brand-new appliances. Enjoy the backyard, complete with a deck, a single-car garage, and convenient rear parking accessible from the back alley.

Built in 1945

Essential Information

MLS® # E4432634

Price \$199,900



Bedrooms	3
Bathrooms	2.00
Full Baths	2
Square Footage	960
Acres	0.00
Year Built	1945
Type	Single Family
Sub-Type	Detached Single Family
Style	Bungalow
Status	Active

Community Information

Address	5109 50 Avenue
Area	Vegreville
Subdivision	Vegreville
City	Vegreville
County	ALBERTA
Province	AB
Postal Code	T9C 1L9

Amenities

Amenities	Deck, Fire Pit, No Smoking Home
Parking	Rear Drive Access, Single Garage Detached

Interior

Appliances	Dishwasher-Built-In, Dryer, Refrigerator, Stove-Electric, Washer, Window Coverings
Heating	Forced Air-1, Natural Gas
Fireplace	Yes
Fireplaces	Glass Door, Mantel
Stories	1
Has Basement	Yes
Basement	Full, Partially Finished

Exterior

Exterior	Wood, Vinyl
Exterior Features	Back Lane, Low Maintenance Landscape, Playground Nearby, Schools, Shopping Nearby
Roof	Asphalt Shingles

Construction	Wood, Vinyl
Foundation	Concrete Perimeter

Additional Information

Date Listed	April 23rd, 2025
Days on Market	20
Zoning	Zone 60

DATA IS DEEMED RELIABLE BUT IS NOT GUARANTEED ACCURATE BY THE REALTORS® ASSOCIATION OF EDMONTON. COPYRIGHT 2025 BY THE REALTORS® ASSOCIATION OF EDMONTON. ALL RIGHTS RESERVED.Trademarks are owned or controlled by the Canadian Real Estate Association (CREA) and identify real estate professionals who are members of CREA (REALTOR®, REALTORS®) and/or the quality of services they provide (MLS®, Multiple Listing Service®)

Listing information last updated on May 12th, 2025 at 10:32pm MDT