

\$139,900 - 334 11325 83 Street, Edmonton

MLS® #E4432906

\$139,900

2 Bedroom, 2.00 Bathroom, 734 sqft

Condo / Townhouse on 0.00 Acres

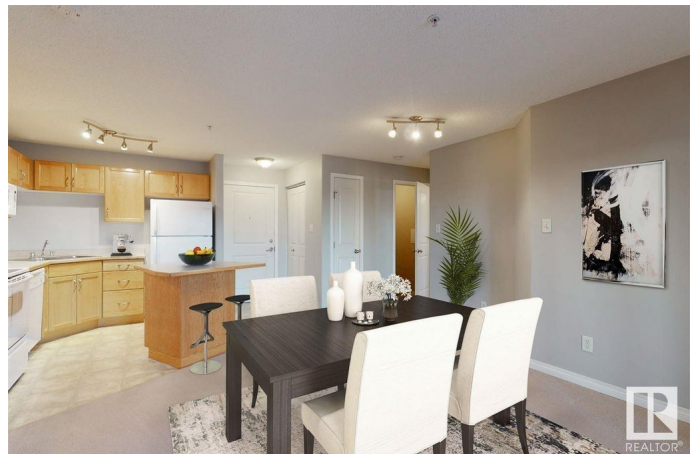
Parkdale (Edmonton), Edmonton, AB

Elevate your lifestyle in the vibrant central Edmonton, surrounded by restaurants, shopping & entertainment. Step outside your front door and be within walking distance to Commonwealth Stadium, Borden Park, LRT station & all your day to day essentials. This third floor unit is sure to please, located in Park Place Boulevard. The gorgeous 2 bedroom, 2 bathroom condo features an open concept floor plan with covered east facing balcony. Step inside to your spacious kitchen, including a central island eating bar & ample cabinetry. Flowing perfectly into your living and dining room this space is great for entertaining family and friends. Additionally this unit includes in-suite laundry & one energized surface parking stall. Enjoy all that the professionally managed building and additional visitor parking for your guests.

Built in 2004

Essential Information

MLS® #	E4432906
Price	\$139,900
Bedrooms	2
Bathrooms	2.00
Full Baths	2
Square Footage	734
Acres	0.00



Year Built	2004
Type	Condo / Townhouse
Sub-Type	Lowrise Apartment
Style	Single Level Apartment
Status	Active

Community Information

Address	334 11325 83 Street
Area	Edmonton
Subdivision	Parkdale (Edmonton)
City	Edmonton
County	ALBERTA
Province	AB
Postal Code	T5B 4W5

Amenities

Amenities	Carbon Monoxide Detectors, Deck, Detectors Smoke, Parking-Plug-Ins, Smart/Program. Thermostat, Security Door, Social Rooms, Sprinkler System-Fire, Storage-In-Suite, Television Connection
Parking	Stall

Interior

Interior Features	ensuite bathroom
Appliances	Dishwasher-Built-In, Hood Fan, Refrigerator, Stacked Washer/Dryer, Stove-Electric
Heating	Baseboard, Hot Water, Natural Gas, Water
# of Stories	4
Stories	1
Has Basement	Yes
Basement	None, No Basement

Exterior

Exterior	Wood, Stucco
Exterior Features	Flat Site, Landscaped, Picnic Area, Playground Nearby, Public Transportation, Schools, Shopping Nearby
Roof	Asphalt Shingles
Construction	Wood, Stucco
Foundation	Concrete Perimeter

Additional Information

Date Listed	April 25th, 2025
Days on Market	6
Zoning	Zone 05
Condo Fee	\$444

DATA IS DEEMED RELIABLE BUT IS NOT GUARANTEED ACCURATE BY THE REALTORS® ASSOCIATION OF EDMONTON. COPYRIGHT 2025 BY THE REALTORS® ASSOCIATION OF EDMONTON. ALL RIGHTS RESERVED. Trademarks are owned or controlled by the Canadian Real Estate Association (CREA) and identify real estate professionals who are members of CREA (REALTOR®, REALTORS®) and/or the quality of services they provide (MLS®, Multiple Listing Service®)

Listing information last updated on May 1st, 2025 at 11:18am MDT