

\$305,000 - 4903a - 47 Avenue, Rural Westlock County

MLS® #E4433307

\$305,000

3 Bedroom, 2.00 Bathroom, 1,572 sqft

Rural on 1.98 Acres

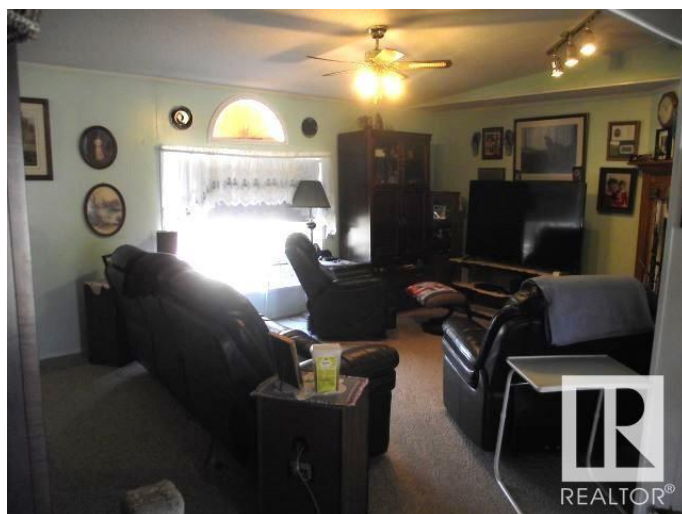
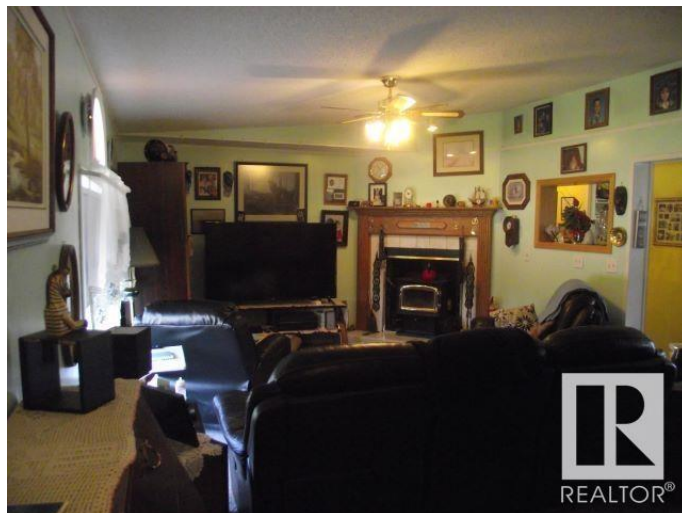
None, Rural Westlock County, AB

Escape to the charm of country living with this well-maintained 3-bedroom, 2-bathroom home situated on a spacious acreage in the quiet community of Jarvie. Perfect for families seeking extra room to grow, this move-in ready property offers a bright, open-concept layout with a large kitchen ideal for family gatherings and everyday living. Enjoy the convenience of a double detached garage, providing plenty of space for vehicles, toys and storage. The home's practical layout, combined with its peaceful rural setting, creates an inviting space you'll be proud to call home. Whether you're looking to enjoy a slower pace or simply need more outdoor space, this property is the perfect fit.

Built in 1993

Essential Information

MLS® #	E4433307
Price	\$305,000
Bedrooms	3
Bathrooms	2.00
Full Baths	2
Square Footage	1,572
Acres	1.98
Year Built	1993
Type	Rural



Sub-Type	Detached Single Family
Style	Raised Bungalow
Status	Active

Community Information

Address	4903a - 47 Avenue
Area	Rural Westlock County
Subdivision	None
City	Rural Westlock County
County	ALBERTA
Province	AB
Postal Code	T0G 1H0

Amenities

Features	Air Conditioner, Closet Organizers, Deck, Greenhouse
----------	--

Interior

Interior Features	ensuite bathroom
Heating	Forced Air-1, Natural Gas
Stories	1
Has Basement	Yes
Basement	None, No Basement

Exterior

Exterior	Modular
Exterior Features	Backs Onto Park/Trees, Low Maintenance Landscape, Treed Lot
Construction	Modular
Foundation	Block, Piling

Additional Information

Date Listed	April 29th, 2025
Days on Market	89
Zoning	Zone 70

DATA IS DEEMED RELIABLE BUT IS NOT GUARANTEED ACCURATE BY THE REALTORS® ASSOCIATION OF EDMONTON. COPYRIGHT 2025 BY THE REALTORS® ASSOCIATION OF EDMONTON. ALL RIGHTS RESERVED. Trademarks are owned or controlled by the Canadian Real Estate Association (CREA) and identify real estate professionals who are members of CREA (REALTOR®, REALTORS®) and/or the quality of services they provide (MLS®, Multiple Listing Service®)

Listing information last updated on July 27th, 2025 at 4:02am MDT