

# **\$649,999 - 13 52508 Rge Road 21, Rural Parkland County**

MLS® #E4433650

**\$649,999**

5 Bedroom, 3.00 Bathroom, 1,581 sqft  
Rural on 1.30 Acres

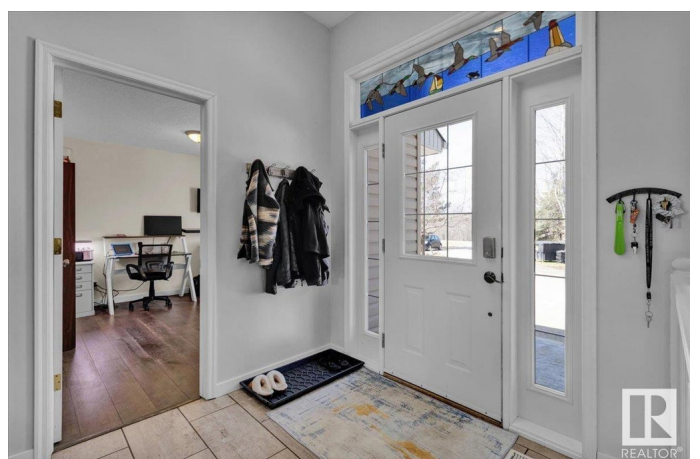
Heatherlea, Rural Parkland County, AB

This stunning 5-bedroom bungalow offers new shingles (2023), spacious and open-concept living with vaulted ceilings and hardwood flooring throughout the main floor. The bright kitchen features a large island with a breakfast bar, tile, stainless steel appliances, and flows seamlessly into the dining and living areas. The main floor includes a laundry room, 2 bedrooms, a 4pc bath, and a spacious primary suite with a walk-in closet and 4pc ensuite featuring a soaker tub and separate shower. The walkout basement is fully finished with a large rec room, 2 more bedrooms, and a 3pc bath. Enjoy the outdoors on a treed, private lot with a pond, large upper deck, walkout patio area, chicken coop and fenced dog run. A paved driveway leads to the double attached garage, making parking a breeze. Located only 15 minutes from Stony Plain, this home has it all!

Built in 2004

## **Essential Information**

MLS® #	E4433650
Price	\$649,999
Bedrooms	5
Bathrooms	3.00



Full Baths	3
Square Footage	1,581
Acres	1.30
Year Built	2004
Type	Rural
Sub-Type	Detached Single Family
Style	Bungalow
Status	Active

### Community Information

Address	13 52508 Rge Road 21
Area	Rural Parkland County
Subdivision	Heatherlea
City	Rural Parkland County
County	ALBERTA
Province	AB
Postal Code	T0E 0H0

### Amenities

Features	Ceiling 9 ft., Closet Organizers, Deck, Detectors Smoke, Dog Run-Fenced In, Patio, R.V. Storage, Vaulted Ceiling, Walkout Basement
----------	--

### Interior

Interior Features	ensuite bathroom
Heating	Forced Air-1, Natural Gas
Fireplace	Yes
Stories	2
Has Basement	Yes
Basement	Full, Finished

### Exterior

Exterior	Wood
Exterior Features	Environmental Reserve, Fenced, Golf Nearby, Hillside, Landscaped, Park/Reserve, Playground Nearby, Private Setting, Schools, Treed Lot
Construction	Wood
Foundation	Preserved Wood

### Additional Information

Date Listed	May 1st, 2025
-------------	---------------

Days on Market 39

Zoning Zone 90

DATA IS DEEMED RELIABLE BUT IS NOT GUARANTEED ACCURATE BY THE REALTORS® ASSOCIATION OF EDMONTON. COPYRIGHT 2025 BY THE REALTORS® ASSOCIATION OF EDMONTON. ALL RIGHTS RESERVED. Trademarks are owned or controlled by the Canadian Real Estate Association (CREA) and identify real estate professionals who are members of CREA (REALTOR®, REALTORS®) and/or the quality of services they provide (MLS®, Multiple Listing Service®)

Listing information last updated on June 9th, 2025 at 5:47am MDT