

## \$409,800 - 14532 106a Avenue, Edmonton

MLS® #E4434580

**\$409,800**

4 Bedroom, 2.00 Bathroom, 1,131 sqft  
Single Family on 0.00 Acres

Grovenor, Edmonton, AB

Bring your tool box! Renovations required and tons of potential for this well located bungalow in Grovenor. Huge pie shaped lot and lots of room to grow. There are two bedrooms up and two down

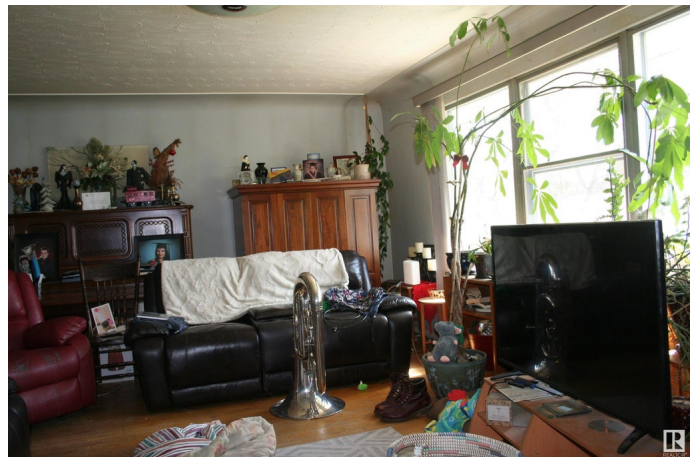
Built in 1954

### Essential Information

MLS® #	E4434580
Price	\$409,800
Bedrooms	4
Bathrooms	2.00
Full Baths	2
Square Footage	1,131
Acres	0.00
Year Built	1954
Type	Single Family
Sub-Type	Detached Single Family
Style	Bungalow
Status	Active

### Community Information

Address	14532 106a Avenue
Area	Edmonton
Subdivision	Grovenor
City	Edmonton
County	ALBERTA



Province	AB
Postal Code	T5N 1E6

### Amenities

Amenities	See Remarks
Parking	Double Garage Detached

### Interior

Appliances	Dishwasher-Portable, Dryer, Refrigerator, Stove-Electric, Washer
Heating	Forced Air-1, Natural Gas
Stories	2
Has Basement	Yes
Basement	Full, Finished

### Exterior

Exterior	Wood, Brick, Stucco
Exterior Features	Back Lane, Cul-De-Sac, Fenced, Flat Site, Playground Nearby, Public Transportation, Schools, Shopping Nearby
Roof	Asphalt Shingles
Construction	Wood, Brick, Stucco
Foundation	Concrete Perimeter

### Additional Information

Date Listed	May 5th, 2025
Days on Market	8
Zoning	Zone 21

DATA IS DEEMED RELIABLE BUT IS NOT GUARANTEED ACCURATE BY THE REALTORS® ASSOCIATION OF EDMONTON. COPYRIGHT 2025 BY THE REALTORS® ASSOCIATION OF EDMONTON. ALL RIGHTS RESERVED.Trademarks are owned or controlled by the Canadian Real Estate Association (CREA) and identify real estate professionals who are members of CREA (REALTOR®, REALTORS®) and/or the quality of services they provide (MLS®, Multiple Listing Service®)

Listing information last updated on May 14th, 2025 at 6:02am MDT