

# **\$418,888 - 7113 21 Avenue, Edmonton**

---

MLS® #E4434662

**\$418,888**

3 Bedroom, 2.50 Bathroom, 1,166 sqft

Single Family on 0.00 Acres

Summerside, Edmonton, AB

This beautiful half duplex in Summerside offers total living space 1673 square ft. Fully finished basement, double detached garage with attic storage, 3 bedrooms, 2.1 bathrooms. Master bedroom with 3 pieces ensuite bath and walk-in closet, home office or Bonus room, second bedroom and 4 pieces bathroom on the upper level. Family entertainment room and large bedroom in the basement. Gorgeous hardwood floor throughout the main level, tile and grout by the entrance, large living room with gas fireplace. Brand new refrigerator, back splashes, island counter top in the kitchen and spacious dining area. Owner replaced Furnace (2023), Hot water Tank (2022), Dryer (2025), new Stairs Carpet (2025), laminated floor on upper level and basement. Backyard lawn garden and sun deck to enjoy. Privilege access to the beautiful Lake Summerside, Walking distance to Michael Strembitsky K-9 school. Easy access to Highway, closed to Airport, South Common Shopping Centre, Grocery Stores, Schools and all amenities.

Built in 2009

## **Essential Information**

MLS® # E4434662

Price \$418,888



Bedrooms	3
Bathrooms	2.50
Full Baths	2
Half Baths	1
Square Footage	1,166
Acres	0.00
Year Built	2009
Type	Single Family
Sub-Type	Half Duplex
Style	2 Storey
Status	Active

### Community Information

Address	7113 21 Avenue
Area	Edmonton
Subdivision	Summerside
City	Edmonton
County	ALBERTA
Province	AB
Postal Code	T6X 0L5

### Amenities

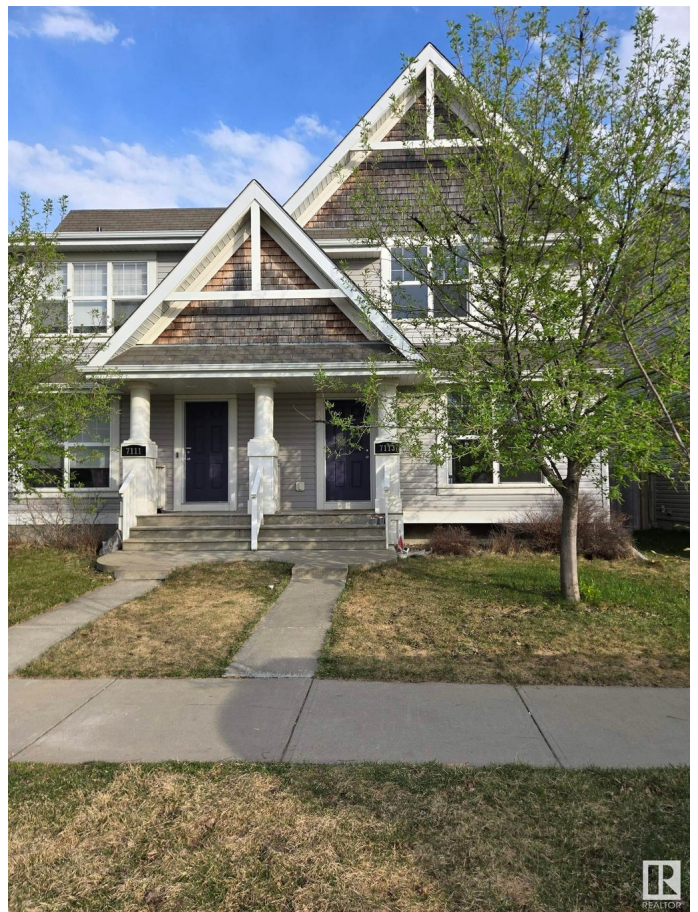
Amenities	Deck, Detectors Smoke, Hot
Parking	Double Garage Detached

### Interior

Interior Features	ensuite bathroom
Appliances	Dishwasher-Built-In, Dryer, G Hood Fan, Refrigerator, Stov
Heating	Forced Air-1, Natural Gas
Fireplace	Yes
Fireplaces	Glass Door, Insert, Tile Surro
Stories	3
Has Basement	Yes
Basement	Full, Finished

### Exterior

Exterior	Wood, Vinyl
Exterior Features	Airport Nearby, Back Lane, Fenced, Paved Lane, Playground Nearby,



	Public Transportation, Schools, Shopping Nearby
Roof	Asphalt Shingles
Construction	Wood, Vinyl
Foundation	Concrete Perimeter

### **Additional Information**

Date Listed	May 6th, 2025
Days on Market	4
Zoning	Zone 53
HOA Fees	443.71
HOA Fees Freq.	Annually

DATA IS DEEMED RELIABLE BUT IS NOT GUARANTEED ACCURATE BY THE REALTORS® ASSOCIATION OF EDMONTON. COPYRIGHT 2025 BY THE REALTORS® ASSOCIATION OF EDMONTON. ALL RIGHTS RESERVED. Trademarks are owned or controlled by the Canadian Real Estate Association (CREA) and identify real estate professionals who are members of CREA (REALTOR®, REALTORS®) and/or the quality of services they provide (MLS®, Multiple Listing Service®)

Listing information last updated on May 10th, 2025 at 9:02am MDT