

\$149,000 - 1503 Jubilee Drive, Sherwood Park

MLS® #E4435026

\$149,000

3 Bedroom, 2.00 Bathroom, 1,213 sqft

Land Lease Community on 0.00 Acres

Jubilee Landing, Sherwood Park, AB

Welcome to this charming and well-maintained mobile home in the heart of Jubilee Landing, Sherwood Park! With 3 spacious bedrooms, this home is perfect for families, first-time buyers, or anyone looking for affordable and comfortable living in a great community. Step inside to find a bright and open living space, ideal for family gatherings and everyday living. The kitchen features ample cabinet space, a cozy dining area, and modern appliances. The primary bedroom offers privacy and comfort, while the additional two bedrooms are perfect for kids, guests, or a home office. One of the standout features of this home is the backyard, set up for kids “ with space to run, play, and enjoy the outdoors. Whether you’re hosting a BBQ or watching the little ones play, this yard is ready for family fun. Located in a quiet, friendly neighborhood with easy access to schools, shopping, and major roadways, Jubilee Landing is one of Sherwood Park’s most welcoming manufactured home communities.

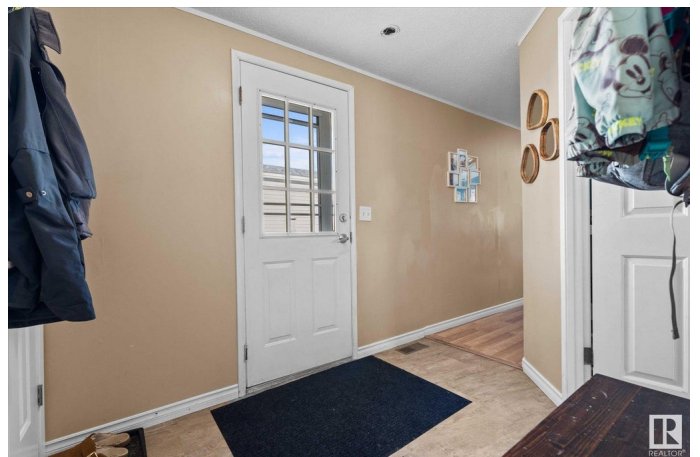
Built in 1992

Essential Information

MLS® # E4435026

Price \$149,000

Bedrooms 3



Bathrooms	2.00
Full Baths	2
Square Footage	1,213
Acres	0.00
Year Built	1992
Type	Land Lease Community
Sub-Type	Detached Single Family
Style	Bungalow
Status	Active

Community Information

Address	1503 Jubilee Drive
Area	Sherwood Park
Subdivision	Jubilee Landing
City	Sherwood Park
County	ALBERTA
Province	AB
Postal Code	T8H 1M1

Amenities

Parking	2 Outdoor Stalls
---------	------------------

Interior

Interior Features	ensuite bathroom
Appliances	Dishwasher-Built-In, Dryer, Microwave Hood Fan, Refrigerator, Stove-Electric, Washer
Heating	Forced Air-1, Natural Gas

Exterior

Exterior	Modular
Construction	Modular
Foundation	Block

Additional Information

Date Listed	May 7th, 2025
Days on Market	34
Zoning	Zone 25

DATA IS DEEMED RELIABLE BUT IS NOT GUARANTEED ACCURATE BY THE REALTORS® ASSOCIATION OF EDMONTON. COPYRIGHT 2025 BY THE REALTORS® ASSOCIATION OF EDMONTON. ALL RIGHTS RESERVED. Trademarks are owned or controlled by the Canadian Real Estate Association (CREA) and identify real

estate professionals who are members of CREA (REALTOR®®, REALTORS®®) and/or the quality of services they provide (MLS®®, Multiple Listing Service®®)

Listing information last updated on June 10th, 2025 at 9:17pm MDT