

\$450,000 - 1750 Chapman Way, Edmonton

MLS® #E4435177

\$450,000

3 Bedroom, 2.50 Bathroom, 1,788 sqft

Single Family on 0.00 Acres

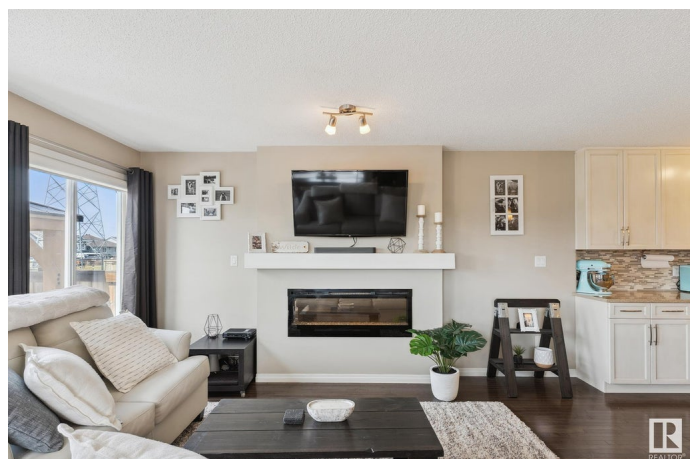
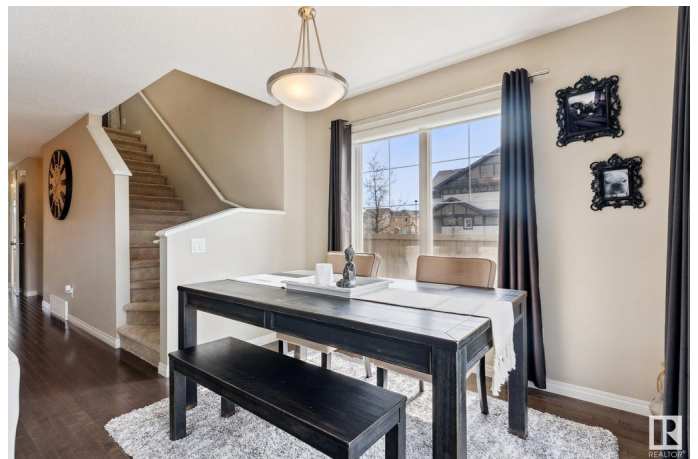
Chappelle Area, Edmonton, AB

Set on a corner lot with a massive yard, this 3-bedroom, 2.5-bath home offers over 1788 sqft of living space not including the basement. Inside, youâ€™ll find an open-concept modern kitchen with granite counters, an 8-foot island, and an electric fireplace that adds a relaxed vibe to the living room. Upstairs includes a versatile bonus room, laundry room, and a spacious primary suite with double doors. Douglas Hunter drapes and blinds finish every window. Outside, enjoy a fully fenced yard, pergola over a concrete patio extension, and a deck made for unwinding. Freshly painted and turn key ready! Close to parks and schoolsâ€”just the way you want it.

Built in 2013

Essential Information

MLS® #	E4435177
Price	\$450,000
Bedrooms	3
Bathrooms	2.50
Full Baths	2
Half Baths	1
Square Footage	1,788
Acres	0.00
Year Built	2013
Type	Single Family



Sub-Type	Half Duplex
Style	2 Storey
Status	Active

Community Information

Address	1750 Chapman Way
Area	Edmonton
Subdivision	Chappelle Area
City	Edmonton
County	ALBERTA
Province	AB
Postal Code	T6W 2E8

Amenities

Amenities	Air Conditioner
Parking	Single Garage Attached

Interior

Interior Features	ensuite bathroom
Appliances	Dishwasher-Built-In, Dryer, Garage Control, Garage Opener, Microwave Hood Fan, Refrigerator, Stove-Electric, Washer, Window Coverings
Heating	Forced Air-1, Natural Gas
Fireplaces	Insert
Stories	2
Has Basement	Yes
Basement	Full, Unfinished

Exterior

Exterior	Wood, Stucco, Vinyl
Exterior Features	Corner Lot, Fenced, Landscaped
Roof	Asphalt Shingles
Construction	Wood, Stucco, Vinyl
Foundation	Concrete Perimeter

Additional Information

Date Listed	May 8th, 2025
Days on Market	5
Zoning	Zone 55
HOA Fees	426

HOA Fees Freq. Annually

DATA IS DEEMED RELIABLE BUT IS NOT GUARANTEED ACCURATE BY THE REALTORS® ASSOCIATION OF EDMONTON. COPYRIGHT 2025 BY THE REALTORS® ASSOCIATION OF EDMONTON. ALL RIGHTS RESERVED.Trademarks are owned or controlled by the Canadian Real Estate Association (CREA) and identify real estate professionals who are members of CREA (REALTOR®, REALTORS®) and/or the quality of services they provide (MLS®, Multiple Listing Service®)

Listing information last updated on May 13th, 2025 at 9:17am MDT