

## \$464,900 - 621 Village Drive, Sherwood Park

MLS® #E4435274

**\$464,900**

5 Bedroom, 2.50 Bathroom, 1,359 sqft

Single Family on 0.00 Acres

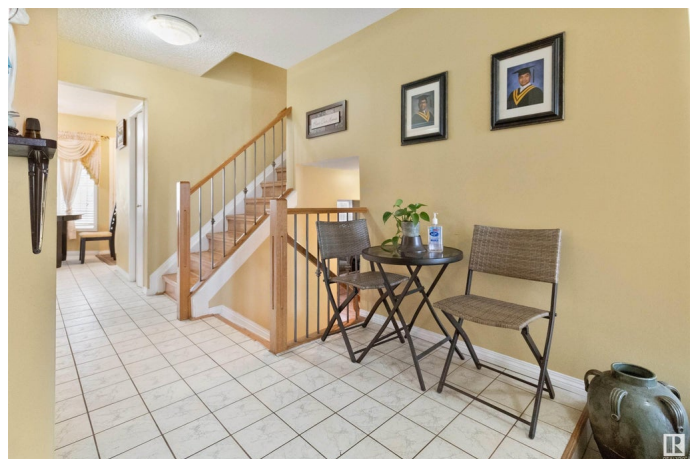
Village on the Lake, Sherwood Park, AB

Located in desirable Village on the Lake, this 1450+ sq ft 4 level split is just waiting for new owners to put their personal mark on. The main floor is spacious and consists of a large living room, dining room and kitchen which leads to backyard. The upper level has a huge master suite with a 4 pce ensuite, and a walk in closet. Two more large bedrooms and a 4 pce bath complete the upper floor. The lower level has a large family room, a 4th bedroom and 2 pce bathroom. The basement is finished with a wet bar, and a laundry area. Furnace was replaced approximately 10 years ago.

Built in 1981

### Essential Information

MLS® #	E4435274
Price	\$464,900
Bedrooms	5
Bathrooms	2.50
Full Baths	2
Half Baths	1
Square Footage	1,359
Acres	0.00
Year Built	1981
Type	Single Family
Sub-Type	Detached Single Family
Style	4 Level Split



Status                      Active

**Community Information**

Address                      621 Village Drive  
Area                              Sherwood Park  
Subdivision                  Village on the Lake  
City                              Sherwood Park  
County                          ALBERTA  
Province                        AB  
Postal Code                  T8A 4K7

**Amenities**

Amenities                      See Remarks  
Parking                        Double Garage Attached

**Interior**

Interior Features            ensuite bathroom  
Appliances                   Dishwasher-Built-In,    Dryer,    Refrigerator,    Stove-Electric,    Vacuum  
   Systems, Washer  
Heating                        Forced Air-2, Natural Gas  
Stories                         4  
Has Basement                Yes  
Basement                      Full, Finished

**Exterior**

Exterior                        Wood, Brick, Vinyl  
Exterior Features            Fenced, Landscaped, Public Transportation, Schools, See Remarks  
Roof                              Asphalt Shingles  
Construction                Wood, Brick, Vinyl  
Foundation                   Concrete Perimeter

**Additional Information**

Date Listed                    May 8th, 2025  
Days on Market              17  
Zoning                          Zone 25

DATA IS DEEMED RELIABLE BUT IS NOT GUARANTEED ACCURATE BY THE REALTORS® ASSOCIATION OF EDMONTON. COPYRIGHT 2025 BY THE REALTORS® ASSOCIATION OF EDMONTON. ALL RIGHTS RESERVED.Trademarks are owned or controlled by the Canadian Real Estate Association (CREA) and identify real estate professionals who are members of CREA (REALTOR®, REALTORS®) and/or the quality of services they provide (MLS®, Multiple Listing Service®)  
Listing information last updated on May 25th, 2025 at 6:47pm MDT