

\$299,999 - 4339 54 Avenue, Tofield

MLS® #E4435528

\$299,999

3 Bedroom, 1.50 Bathroom, 1,208 sqft
Single Family on 0.00 Acres

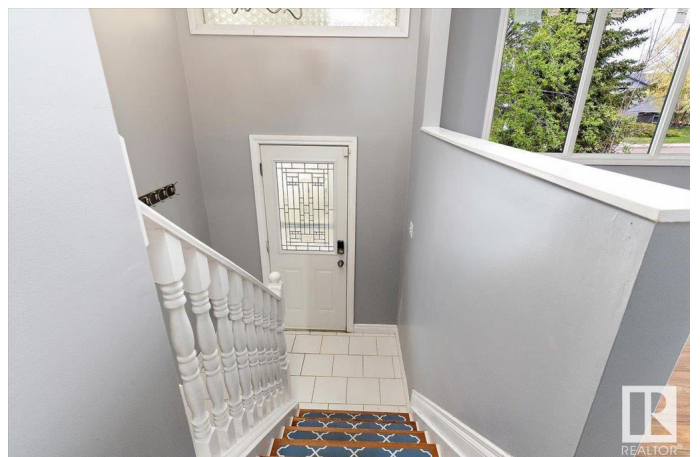
Tofield, Tofield, AB

Welcome to 4339 54av in the charming community of Tofield! 3 bedroom, 1 1/2 bathroom bilevel with oversised double, detached garage! Sunny living room greets you upon entering this lovely home. Galley kitchen features island and has adjoining dining area with access to outside, south-facing deck. Primary bedroom with 2pc ensuite, 2nd & 3rd bedrooms, 4pc bathroom, and laundry completes the main floor. Basement is roughed-in for a 3pc bathroom and partially finished with the opportunity to finish large family room and two bedrooms. Recent upgrades includes shingles and windows. Fenced backyard yard has a storage shed. Back deck includes hot tub and gazebo. Back alley access to your garage amd more off street parking. Close to Schools and playground. A must see !!!

Built in 1982

Essential Information

| | |
|----------------|-----------|
| MLS® # | E4435528 |
| Price | \$299,999 |
| Bedrooms | 3 |
| Bathrooms | 1.50 |
| Full Baths | 1 |
| Half Baths | 1 |
| Square Footage | 1,208 |



| | |
|------------|------------------------|
| Acres | 0.00 |
| Year Built | 1982 |
| Type | Single Family |
| Sub-Type | Detached Single Family |
| Style | Bi-Level |
| Status | Active |

Community Information

| | |
|-------------|----------------|
| Address | 4339 54 Avenue |
| Area | Tofield |
| Subdivision | Tofield |
| City | Tofield |
| County | ALBERTA |
| Province | AB |
| Postal Code | T0B 4J0 |

Amenities

| | |
|-----------|------------------------|
| Amenities | Deck |
| Parking | Double Garage Detached |

Interior

| | |
|-------------------|--|
| Interior Features | ensuite bathroom |
| Appliances | Alarm/Security System, Dishwasher-Built-In, Dryer, Garage Control, Garage Opener, Refrigerator, Storage Shed, Stove-Electric, Washers-Two, Hot Tub |
| Heating | Forced Air-1, Natural Gas |
| Stories | 1 |
| Has Basement | Yes |
| Basement | Full, Partially Finished |

Exterior

| | |
|-------------------|---|
| Exterior | Wood, Vinyl |
| Exterior Features | Back Lane, Fenced, Playground Nearby, Schools |
| Roof | Asphalt Shingles |
| Construction | Wood, Vinyl |
| Foundation | Concrete Perimeter |

School Information

| | |
|------------|-------------------------|
| Elementary | C.W.Sears Tofield (K-4) |
|------------|-------------------------|

| | |
|--------|---------------|
| Middle | Tofield (5-9) |
| High | Tofield |

Additional Information

| | |
|----------------|---------------|
| Date Listed | May 9th, 2025 |
| Days on Market | 3 |
| Zoning | Zone 80 |

DATA IS DEEMED RELIABLE BUT IS NOT GUARANTEED ACCURATE BY THE REALTORS® ASSOCIATION OF EDMONTON. COPYRIGHT 2025 BY THE REALTORS® ASSOCIATION OF EDMONTON. ALL RIGHTS RESERVED. Trademarks are owned or controlled by the Canadian Real Estate Association (CREA) and identify real estate professionals who are members of CREA (REALTOR®, REALTORS®) and/or the quality of services they provide (MLS®, Multiple Listing Service®)

Listing information last updated on May 12th, 2025 at 10:33am MDT