

\$524,900 - 75 Appleton Crescent, Sherwood Park

MLS® #E4435595

\$524,900

3 Bedroom, 2.50 Bathroom, 1,756 sqft

Single Family on 0.00 Acres

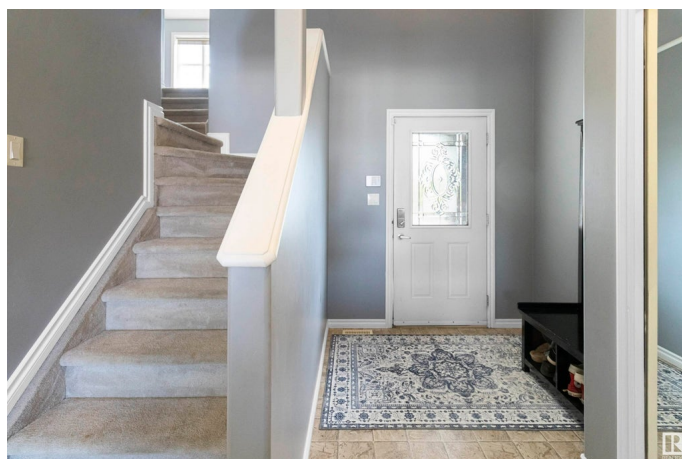
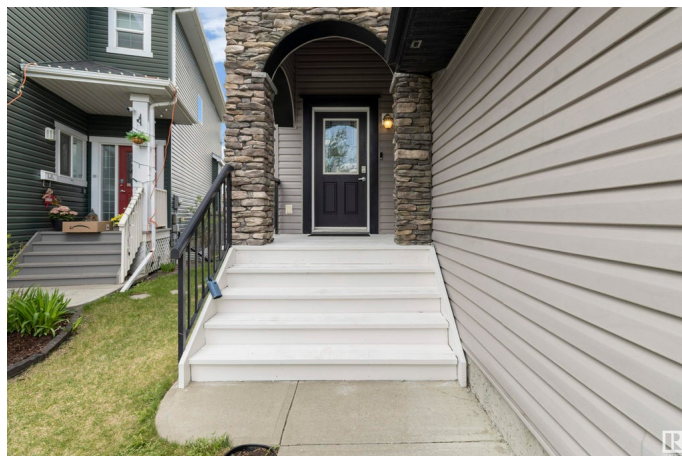
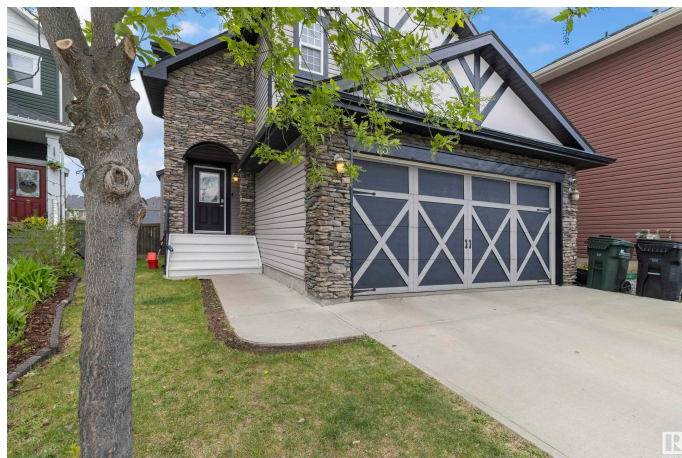
Aspen Trails, Sherwood Park, AB

This home is priced to move! Offers a great location close to all major amenities and situated on a quiet street. Featuring A/C and a large double attached garage, what else do you need. The main floor has a nice open layout with kitchen, breakfast nook and living room, complete with gas fireplace and great for entertaining. Main floor laundry and 2 pc bath round out the main floor. Upstairs you'll find a large bonus room, 2 bedrooms, 4 pc bath and primary bedroom complete with walk in closet, soaker tub and separate shower. The basement is unspoiled but ready to go with bathroom roughed in.

Built in 2006

Essential Information

MLS® #	E4435595
Price	\$524,900
Bedrooms	3
Bathrooms	2.50
Full Baths	2
Half Baths	1
Square Footage	1,756
Acres	0.00
Year Built	2006
Type	Single Family
Sub-Type	Detached Single Family



Style	2 Storey
Status	Active

Community Information

Address	75 Appleton Crescent
Area	Sherwood Park
Subdivision	Aspen Trails
City	Sherwood Park
County	ALBERTA
Province	AB
Postal Code	T8H 0A4

Amenities

Amenities	Air Conditioner, Deck, Patio
Parking Spaces	4
Parking	Double Garage Attached

Interior

Interior Features	ensuite bathroom
Appliances	Air Conditioning-Central, Dishwasher-Built-In, Dryer, Garage Opener, Microwave Hood Fan, Refrigerator, Stove-Electric, Washer, Window Coverings
Heating	Forced Air-1, Natural Gas
Stories	2
Has Basement	Yes
Basement	Full, Unfinished

Exterior

Exterior	Wood, Stone, Vinyl
Exterior Features	Cul-De-Sac, Fenced, Flat Site, Landscaped, Level Land, Playground Nearby, Schools, Shopping Nearby
Roof	Asphalt Shingles
Construction	Wood, Stone, Vinyl
Foundation	Concrete Perimeter

Additional Information

Date Listed	May 9th, 2025
Days on Market	3
Zoning	Zone 25

DATA IS DEEMED RELIABLE BUT IS NOT GUARANTEED ACCURATE BY THE REALTORS® ASSOCIATION OF EDMONTON. COPYRIGHT 2025 BY THE REALTORS® ASSOCIATION OF EDMONTON. ALL RIGHTS RESERVED. Trademarks are owned or controlled by the Canadian Real Estate Association (CREA) and identify real estate professionals who are members of CREA (REALTOR®, REALTORS®) and/or the quality of services they provide (MLS®, Multiple Listing Service®)

Listing information last updated on May 12th, 2025 at 1:17pm MDT