

## \$429,900 - 8 Beaverhill View Crescent, Tofield

MLS® #E4435786

**\$429,900**

4 Bedroom, 3.50 Bathroom, 1,901 sqft

Single Family on 0.00 Acres

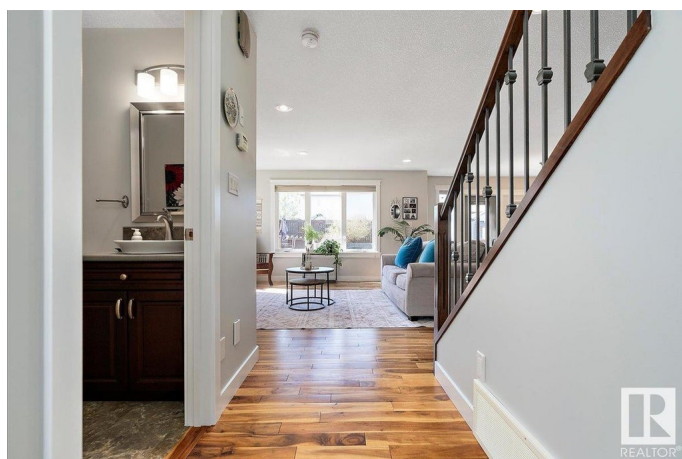
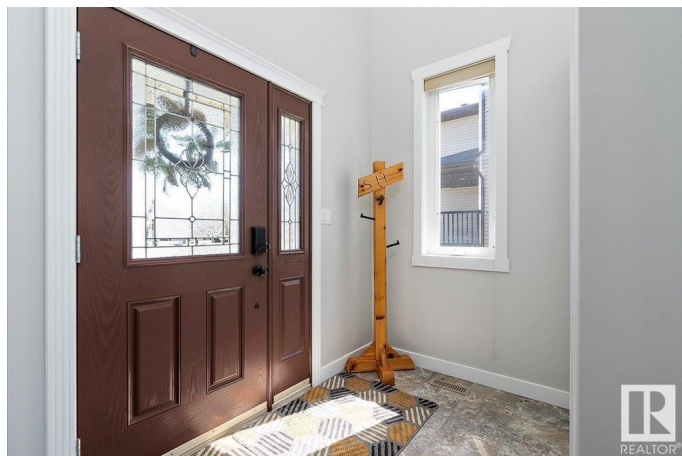
Tofield, Tofield, AB

GREAT FAMILY HOME! 4 bedroom, 3 1/2 bathroom, 2 storey with double attached garage! Open concept design of kitchen, dinette, and living room greets you upon entering this lovely home. Kitchen features: tiered prep island with bar seating and stainless steel appliances. Sunny living room has gas fireplace and dining area has access to west-facing deck. 2pc bathroom and laundry completes the main floor. Upper level consists of bonus entertaining room, primary bedroom with 3pc ensuite & walkin closet, 2nd & 3rd bedrooms, and 4pc bathroom. Basement has in-floor heating and is finished with family room, bedroom, exercise room, and 3pc bathroom. Backyard is fully fenced and beautifully landscaped! Tiered, stone surround landscaping is highlighted by patio area, firepit area, shrubbery, and flower beds! Walking distance to Schools. A must see !!

Built in 2011

### Essential Information

MLS® #	E4435786
Price	\$429,900
Bedrooms	4
Bathrooms	3.50
Full Baths	3
Half Baths	1



Square Footage	1,901
Acres	0.00
Year Built	2011
Type	Single Family
Sub-Type	Detached Single Family
Style	2 Storey
Status	Active

### **Community Information**

Address	8 Beaverhill View Crescent
Area	Tofield
Subdivision	Tofield
City	Tofield
County	ALBERTA
Province	AB
Postal Code	T0B 4J0

### **Amenities**

Amenities	Air Conditioner, Deck, See Remarks
Parking	Double Garage Attached

### **Interior**

Interior Features	ensuite bathroom
Appliances	Air Conditioning-Central, Dishwasher-Built-In, Dryer, Garage Opener, Refrigerator, Storage Shed, Stove-Electric, Washer, Window Coverings
Heating	Forced Air-1, In Floor Heat System, Natural Gas
Fireplace	Yes
Fireplaces	Tile Surround
Stories	3
Has Basement	Yes
Basement	Full, Finished

### **Exterior**

Exterior	Wood, Stone, Vinyl
Exterior Features	Fenced, Landscaped, No Back Lane, Playground Nearby, Schools, See Remarks
Roof	Asphalt Shingles
Construction	Wood, Stone, Vinyl
Foundation	Concrete Perimeter

**School Information**

Elementary	C.W.Sears Tofield (K-4)
Middle	Tofield (5-9)
High	Tofield

**Additional Information**

Date Listed	May 10th, 2025
Days on Market	2
Zoning	Zone 80

DATA IS DEEMED RELIABLE BUT IS NOT GUARANTEED ACCURATE BY THE REALTORS® ASSOCIATION OF EDMONTON. COPYRIGHT 2025 BY THE REALTORS® ASSOCIATION OF EDMONTON. ALL RIGHTS RESERVED.Trademarks are owned or controlled by the Canadian Real Estate Association (CREA) and identify real estate professionals who are members of CREA (REALTOR®, REALTORS®) and/or the quality of services they provide (MLS®, Multiple Listing Service®)

Listing information last updated on May 12th, 2025 at 6:32am MDT