

\$379,000 - 308 10169 104 Street, Edmonton

MLS® #E4436255

\$379,000

1 Bedroom, 1.00 Bathroom, 1,119 sqft
Condo / Townhouse on 0.00 Acres

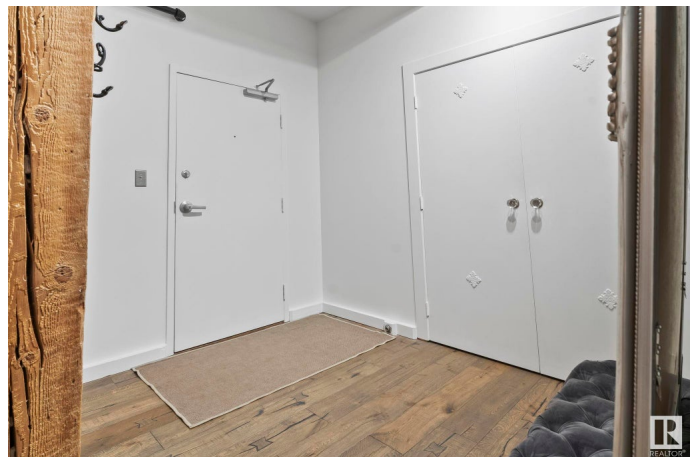
Downtown (Edmonton), Edmonton, AB

Stylish New York-Style Loft in Phillips Lofts
Downtown Edmonton Live in the heart of Edmonton's vibrant Warehouse District on 104th Street. This spacious, open-concept loft blends heritage character with modern style—featuring exposed brick, original timber beams, concrete accents, and high ceilings. Enjoy executive finishes, large windows, and unique architectural details throughout. Includes rare secure parking, in suite laundry, renovated kitchen, a shared communal rooftop patio with panoramic city views, and access to downtown's top dining, arts, and boutique shopping. Walk to Rogers Place, trendy restaurants, cocktail bars, local coffee shops, boutique gyms, and the scenic River Valley trail system. Well-managed building with strong community vibe. Ideal for professionals seeking urban style with historic charm. A rare opportunity to own a loft in one of downtown Edmonton's most iconic buildings—offering an unparalleled lifestyle in the heart of the city's most walkable and vibrant streets.

Built in 1930

Essential Information

MLS® #	E4436255
Price	\$379,000



Bedrooms	1
Bathrooms	1.00
Full Baths	1
Square Footage	1,119
Acres	0.00
Year Built	1930
Type	Condo / Townhouse
Sub-Type	Lowrise Apartment
Style	Loft
Status	Active

Community Information

Address	308 10169 104 Street
Area	Edmonton
Subdivision	Downtown (Edmonton)
City	Edmonton
County	ALBERTA
Province	AB
Postal Code	T5J 1A5

Amenities

Amenities	Air Conditioner, Ceiling 10 ft., Closet Organizers, Deck, No Smoking Home, Open Beam, Parking-Visitor, Secured Parking, See Remarks
Parking	Stall

Interior

Interior Features	ensuite bathroom
Appliances	Dishwasher-Built-In, Dryer, Microwave Hood Fan, Refrigerator, Stove-Electric, Washer
Heating	Fan Coil, Natural Gas
# of Stories	5
Stories	1
Has Basement	Yes
Basement	None, No Basement

Exterior

Exterior	Brick
Exterior Features	Golf Nearby, Park/Reserve, Public Transportation, Shopping Nearby, View City, View Downtown, See Remarks

Roof	Tar & Gravel
Construction	Brick
Foundation	Concrete Perimeter

Additional Information

Date Listed	May 13th, 2025
Days on Market	12
Zoning	Zone 12
Condo Fee	\$614

DATA IS DEEMED RELIABLE BUT IS NOT GUARANTEED ACCURATE BY THE REALTORS® ASSOCIATION OF EDMONTON. COPYRIGHT 2025 BY THE REALTORS® ASSOCIATION OF EDMONTON. ALL RIGHTS RESERVED. Trademarks are owned or controlled by the Canadian Real Estate Association (CREA) and identify real estate professionals who are members of CREA (REALTOR®, REALTORS®) and/or the quality of services they provide (MLS®, Multiple Listing Service®)

Listing information last updated on May 24th, 2025 at 11:47pm MDT