

\$205,000 - 58 & 54 Lakeview Avenue, Rural Lac Ste. Anne County

MLS® #E4437050

\$205,000

2 Bedroom, 1.00 Bathroom, 843 sqft

Rural on 0.25 Acres

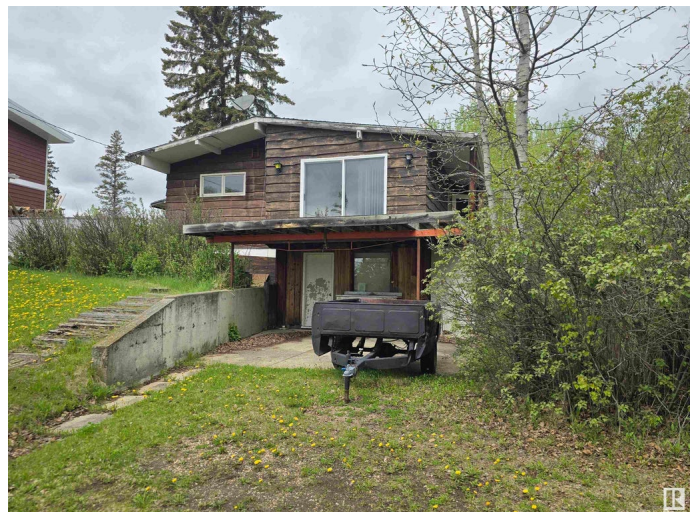
South View, Rural Lac Ste. Anne County, AB

Are you seeking a summer vacation spot? What about a retirement property? Whatever it is you are seeking, check out Lake Isle. The Summer Village of South View has two large lots waiting for you. Both lots (side-by-side) included, and each are over 5000 sq ft, private, serene, and has spectacular lake view! One of the lots has a hillside bungalow that is awaiting your renovations, it has a walk out for future finishing. From the top deck you will have a gorgeous view of the lake, just stunning! The village has already put the wheels in motion and will be removing the large poplar trees across the road, so there will be NO buildings in front and an unobstructed south view of lake. This is a handyman special property, but if you can vision your future here, then you must see! There is even room to build a second family home, or a summer bunk-house! Treed, private, tons of potential!

Built in 1978

Essential Information

MLS® #	E4437050
Price	\$205,000
Bedrooms	2
Bathrooms	1.00



Full Baths	1
Square Footage	843
Acres	0.25
Year Built	1978
Type	Rural
Sub-Type	Detached Single Family
Style	Hillside Bungalow
Status	Active

Community Information

Address	58 & 54 Lakeview Avenue
Area	Rural Lac Ste. Anne County
Subdivision	South View
City	Rural Lac Ste. Anne County
County	ALBERTA
Province	AB
Postal Code	T0E 1H0

Amenities

Features	See Remarks
----------	-------------

Interior

Heating	Forced Air-1, Natural Gas
Stories	1
Has Basement	Yes
Basement	See Remarks, Unfinished

Exterior

Exterior	Wood
Exterior Features	Lake View, Low Maintenance Landscape, Picnic Area, Playground Nearby
Construction	Wood
Foundation	Concrete Perimeter

Additional Information

Date Listed	May 16th, 2025
Days on Market	25
Zoning	Zone 75

DATA IS DEEMED RELIABLE BUT IS NOT GUARANTEED ACCURATE BY THE REALTORS® ASSOCIATION OF

EDMONTON. COPYRIGHT 2025 BY THE REALTORS® ASSOCIATION OF EDMONTON. ALL RIGHTS RESERVED.Trademarks are owned or controlled by the Canadian Real Estate Association (CREA) and identify real estate professionals who are members of CREA (REALTOR®, REALTORS®) and/or the quality of services they provide (MLS®, Multiple Listing Service®)

Listing information last updated on June 9th, 2025 at 11:32pm MDT