

\$834,900 - 5812 Mitchell Drive, Drayton Valley

MLS® #E4437155

\$834,900

3 Bedroom, 2.50 Bathroom, 2,540 sqft
Single Family on 0.00 Acres

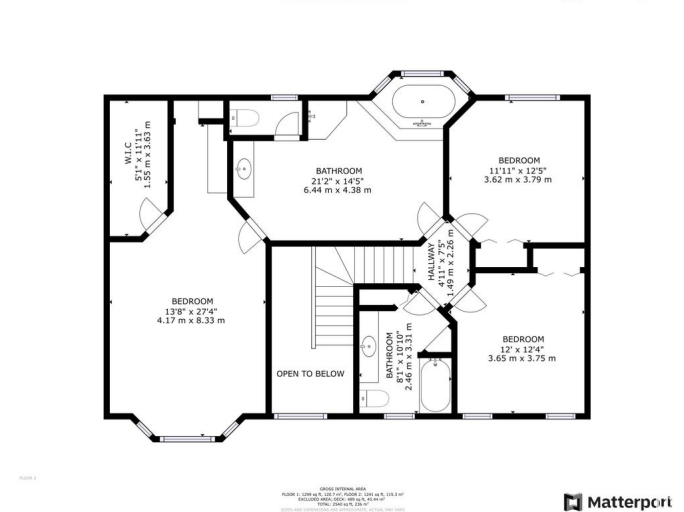
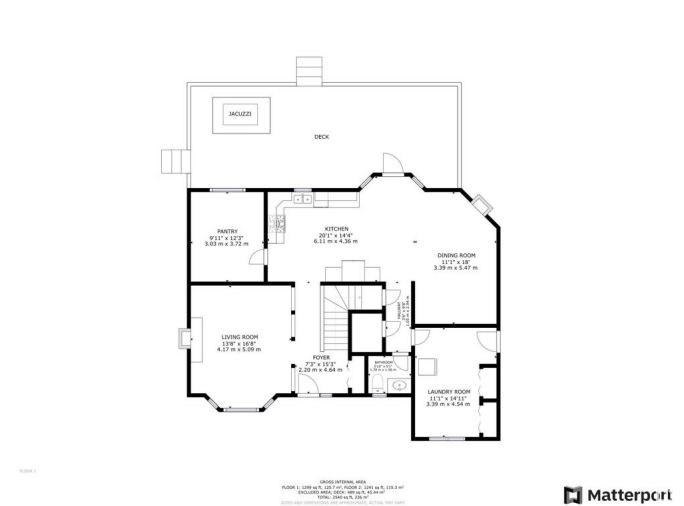
Drayton Valley, Drayton Valley, AB

Beautiful 4 acre acreage located within the town limits. With 2540 sq ft of living area, this 3 BR 2.5 bath home with a flex room offers enough space for any family. Living on an acreage within town limits is a rare opportunity! This property comes with a triple heated attached garage, a NEW 44' x 42' incredible shop with tankless hot water, a full bathroom, radiant heat, a hydraulic lift and is large enough to store your RV. Outside there is a 40' x 24' deck with a hot tub, two firepits & a horseshoe game. The private yard is beautifully landscaped with fruit trees, bushes, flowers & there are deer, fox and other animals which will visit often. There are two sheds, a greenhouse, a portable shelter, log shelter and firewood storage. There is a drilled well but municipal service is available, fiber optic internet & there is also town garbage pickup. Inside there is a newer wood FP, a gas FP, new SS appliances and much much more! The basement is on a 4 ft crawlspace. This is a must see property!!!

Built in 2002

Essential Information

MLS® #	E4437155
Price	\$834,900
Bedrooms	3



Bathrooms	2.50
Full Baths	2
Half Baths	1
Square Footage	2,540
Acres	0.00
Year Built	2002
Type	Single Family
Sub-Type	Detached Single Family
Style	2 Storey
Status	Active

Community Information

Address	5812 Mitchell Drive
Area	Drayton Valley
Subdivision	Drayton Valley
City	Drayton Valley
County	ALBERTA
Province	AB
Postal Code	T7A 1V1

Amenities

Amenities	Carbon Monoxide Detectors, Deck, Detectors Smoke, Exterior Walls-2"x6", Fire Pit, Greenhouse, Hot Tub, Hot Water Natural Gas, No Smoking Home, R.V. Storage, Vinyl Windows
Parking	RV Parking, Shop, Triple Garage Attached

Interior

Interior Features	ensuite bathroom
Appliances	Alarm/Security System, Dishwasher-Built-In, Dryer, Garage Control, Garage Opener, Microwave Hood Fan, Storage Shed, Stove-Gas, Washer, Window Coverings, Refrigerators-Two, Curtains and Blinds, Garage Heater, Hot Tub
Heating	Forced Air-1, Natural Gas
Fireplace	Yes
Fireplaces	Stone Facing
Stories	2
Has Basement	Yes
Basement	See Remarks, Unfinished

Exterior

Exterior	Wood, Vinyl
Exterior Features	Backs Onto Park/Trees, Flat Site, Fruit Trees/Shrubs, Golf Nearby, Landscaped, No Through Road, Private Setting, Schools, Shopping Nearby
Roof	Asphalt Shingles
Construction	Wood, Vinyl
Foundation	Concrete Perimeter

Additional Information

Date Listed	May 17th, 2025
Days on Market	21
Zoning	Zone 90

DATA IS DEEMED RELIABLE BUT IS NOT GUARANTEED ACCURATE BY THE REALTORS® ASSOCIATION OF EDMONTON. COPYRIGHT 2025 BY THE REALTORS® ASSOCIATION OF EDMONTON. ALL RIGHTS RESERVED.Trademarks are owned or controlled by the Canadian Real Estate Association (CREA) and identify real estate professionals who are members of CREA (REALTOR®, REALTORS®) and/or the quality of services they provide (MLS®, Multiple Listing Service®)

Listing information last updated on June 7th, 2025 at 5:33pm MDT