

\$40,000 - 4520 50 Avenue, Warburg

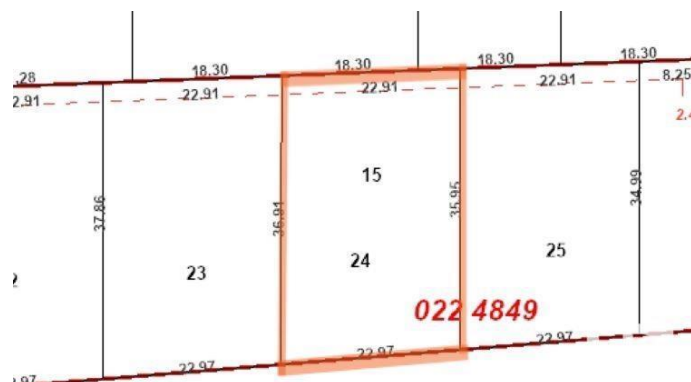
MLS® #E4437272

\$40,000

0 Bedroom, 0.00 Bathroom,
Single Family on 0.00 Acres

Warburg, Warburg, AB

Lot 24 is a large 75'x121' residential vacant lot in a newer subdivision. New paved road and sidewalks in place and municipal services at property line. The Village of Warburg is centrally located about thirty minutes from Leduc, Drayton Valley, Stony Plain, Nisku and the Edmonton International Airport and 15 minutes from Pigeon Lake and Genesee Power Plant. A wonderful community to call home!



Essential Information

MLS® #	E4437272
Price	\$40,000
Bathrooms	0.00
Acres	0.00
Type	Single Family
Sub-Type	Vacant Lot/Land
Status	Active

Community Information

Address	4520 50 Avenue
Area	Warburg
Subdivision	Warburg
City	Warburg
County	ALBERTA
Province	AB
Postal Code	T0C 2T0

Exterior

Exterior Features Flat Site, Schools

Additional Information

Date Listed May 17th, 2025

Days on Market 73

Zoning Zone 90

DATA IS DEEMED RELIABLE BUT IS NOT GUARANTEED ACCURATE BY THE REALTORS® ASSOCIATION OF EDMONTON. COPYRIGHT 2025 BY THE REALTORS® ASSOCIATION OF EDMONTON. ALL RIGHTS RESERVED.Trademarks are owned or controlled by the Canadian Real Estate Association (CREA) and identify real estate professionals who are members of CREA (REALTOR®, REALTORS®) and/or the quality of services they provide (MLS®, Multiple Listing Service®)

Listing information last updated on July 29th, 2025 at 2:32am MDT