

\$149,900 - 409 56228 Rge Rd 42, Rural St. Paul County

MLS® #E4437551

\$149,900

0 Bedroom, 0.00 Bathroom,
Rural on 10.01 Acres

Laurier Lake, Rural St. Paul County, AB

10.01 acres of land ready to support your dream home. What better place to lay down your roots than at the lake, Laurier Lake to be exact! Sitting in the quiet subdivision of Forest Lawn Estates, this parcel offers easy lake access and unlimited fun for the kids and yourself.

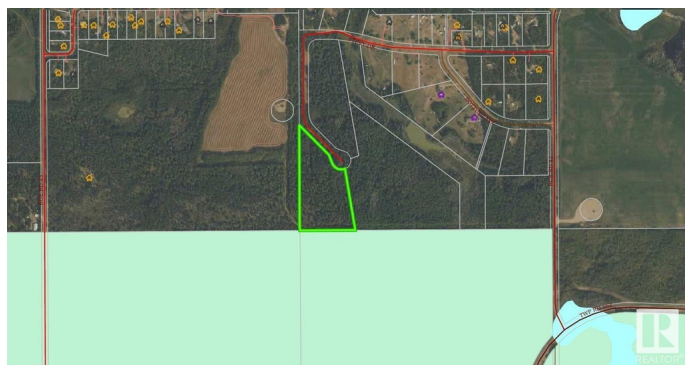
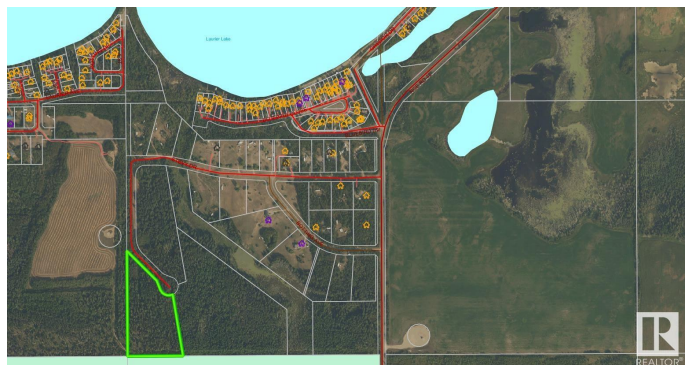
Essential Information

MLS® #	E4437551
Price	\$149,900
Bathrooms	0.00
Acres	10.01
Type	Rural
Sub-Type	Vacant Lot/Land
Status	Active

Community Information

Address	409 56228 Rge Rd 42
Area	Rural St. Paul County
Subdivision	Laurier Lake
City	Rural St. Paul County
County	ALBERTA
Province	AB
Postal Code	T0A 1M0

Interior



Heating See Remarks

Exterior

Exterior Features Private Setting

Additional Information

Date Listed May 21st, 2025

Days on Market 67

Zoning Zone 60

DATA IS DEEMED RELIABLE BUT IS NOT GUARANTEED ACCURATE BY THE REALTORS® ASSOCIATION OF EDMONTON. COPYRIGHT 2025 BY THE REALTORS® ASSOCIATION OF EDMONTON. ALL RIGHTS RESERVED.Trademarks are owned or controlled by the Canadian Real Estate Association (CREA) and identify real estate professionals who are members of CREA (REALTOR®, REALTORS®) and/or the quality of services they provide (MLS®, Multiple Listing Service®)

Listing information last updated on July 27th, 2025 at 8:17am MDT