

# \$157,000 - 1161 Lakevista Drive, Sherwood Park

MLS® #E4437706

**\$157,000**

3 Bedroom, 2.00 Bathroom, 1,214 sqft  
Land Lease Community on 0.00 Acres

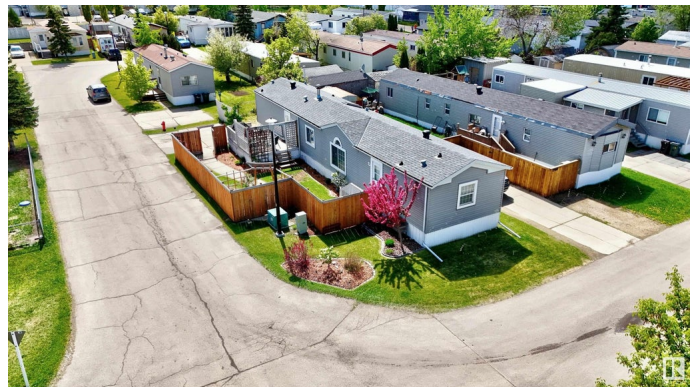
Lakeland Village, Sherwood Park, AB

Fall in LOVE with this bright, beautifully upgraded 3 bed, 2 bath home in the incredible Lakeland Village, one of the most sought-after, family-friendly communities around! Perfectly positioned on a prime corner lot, this home shines with sun-drenched living spaces, a lush, landscaped yard, and a private deck with custom privacy wall, your own outdoor retreat! Immaculately cared for with standout updates: new roof (2022), hot water tank (2023), washer & bathroom refresh (2024), plus full professional leveling & underbelly inspection (2025). Enjoy quiet streets, a children's park just steps away, and a community known for its safety, pride of ownership, and impeccable upkeep. All major appliances included—just move in and start living your best life! Moments from hospitals, shops, banks, Walmart, and more. This is the one you've been waiting for, come see it today!

Built in 1994

## Essential Information

MLS® #	E4437706
Price	\$157,000
Bedrooms	3
Bathrooms	2.00
Full Baths	2
Square Footage	1,214



Acres	0.00
Year Built	1994
Type	Land Lease Community
Sub-Type	Detached Single Family
Style	Bungalow
Status	Active

### Community Information

Address	1161 Lakevista Drive
Area	Sherwood Park
Subdivision	Lakeland Village
City	Sherwood Park
County	ALBERTA
Province	AB
Postal Code	T8H 1K1

### Amenities

Parking Spaces	2
Parking	2 Outdoor Stalls

### Interior

Interior Features	ensuite bathroom
Appliances	Dishwasher-Built-In, Dryer, Fan-Ceiling, Microwave Hood Fan, Oven-Microwave, Refrigerator, Storage Shed, Stove-Electric, Washer, Window Coverings
Heating	Forced Air-1, Natural Gas

### Exterior

Foundation	Piling
------------	--------

### Additional Information

Date Listed	May 22nd, 2025
Days on Market	18
Zoning	Zone 25

DATA IS DEEMED RELIABLE BUT IS NOT GUARANTEED ACCURATE BY THE REALTORS® ASSOCIATION OF EDMONTON. COPYRIGHT 2025 BY THE REALTORS® ASSOCIATION OF EDMONTON. ALL RIGHTS RESERVED. Trademarks are owned or controlled by the Canadian Real Estate Association (CREA) and identify real estate professionals who are members of CREA (REALTOR®, REALTORS®) and/or the quality of services they provide (MLS®, Multiple Listing Service®)

Listing information last updated on June 8th, 2025 at 10:02pm MDT