

\$524,900 - 21 Ashton Gate, Spruce Grove

MLS® #E4438088

\$524,900

3 Bedroom, 2.50 Bathroom, 1,766 sqft

Single Family on 0.00 Acres

Aspen Glen, Spruce Grove, AB

Move-in ready family home in Aspen Glen! This beautifully maintained 2-storey offers over 1,700 sq ft above grade plus a fully finished basement. The main floor boasts a spacious open-concept layout with hardwood floors, built-in sound system, and fresh paint. The kitchen features espresso cabinets, stainless steel appliances, and a large central island, flowing into the dining area—ideal for entertaining. A convenient 2-pc bath completes the main floor. Upstairs, enjoy a massive bonus room with built-in speakers and large windows, a 4-pc bath, and 3 generous bedrooms. The primary suite includes a walk-in closet, 4-pc ensuite with a soaker tub, and added sliding door for privacy. The finished basement offers soft carpet—perfect for a playroom, rec space, or extra bedroom. The large double attached garage provides ample storage, and the professionally landscaped backyard is a true oasis. This stylish, functional home is ready for your family—don't miss out!

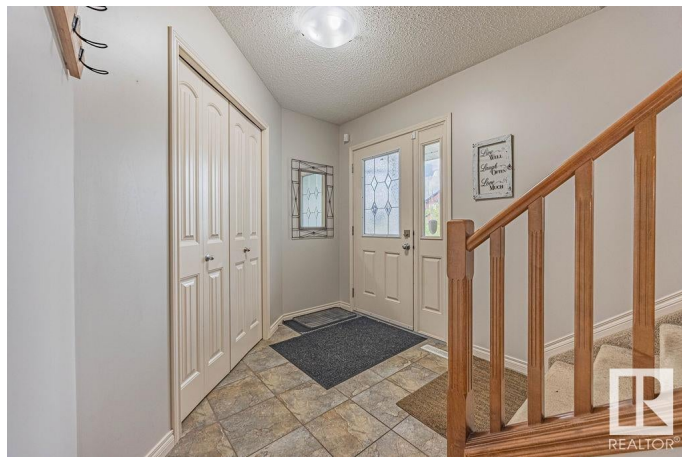
Built in 2009

Essential Information

MLS® # E4438088

Price \$524,900

Bedrooms 3



Bathrooms	2.50
Full Baths	2
Half Baths	1
Square Footage	1,766
Acres	0.00
Year Built	2009
Type	Single Family
Sub-Type	Detached Single Family
Style	2 Storey
Status	Active

Community Information

Address	21 Ashton Gate
Area	Spruce Grove
Subdivision	Aspen Glen
City	Spruce Grove
County	ALBERTA
Province	AB
Postal Code	T7X 0H9

Amenities

Amenities	Deck, Fire Pit, Gazebo, Hot Water Instant, No Smoking Home
Parking	Double Garage Attached, Heated

Interior

Interior Features	ensuite bathroom
Appliances	Dishwasher-Built-In, Dryer, Garage Control, Refrigerator, Stove-Electric, Washer, TV Wall Mount
Heating	Forced Air-1, Natural Gas
Fireplace	Yes
Fireplaces	Tile Surround
Stories	3
Has Basement	Yes
Basement	Full, Finished

Exterior

Exterior	Wood, Vinyl
Exterior Features	Fenced, Playground Nearby, Public Transportation, Schools
Roof	Asphalt Shingles

Construction	Wood, Vinyl
Foundation	Concrete Perimeter

Additional Information

Date Listed	May 23rd, 2025
Days on Market	25
Zoning	Zone 91

DATA IS DEEMED RELIABLE BUT IS NOT GUARANTEED ACCURATE BY THE REALTORS® ASSOCIATION OF EDMONTON. COPYRIGHT 2025 BY THE REALTORS® ASSOCIATION OF EDMONTON. ALL RIGHTS RESERVED.Trademarks are owned or controlled by the Canadian Real Estate Association (CREA) and identify real estate professionals who are members of CREA (REALTOR®, REALTORS®) and/or the quality of services they provide (MLS®, Multiple Listing Service®)

Listing information last updated on June 17th, 2025 at 7:32pm MDT