

\$479,900 - 530 Reynalds Wynd, Leduc

MLS® #E4438170

\$479,900

3 Bedroom, 2.50 Bathroom, 1,581 sqft

Single Family on 0.00 Acres

Robinson, Leduc, AB

NICELY UPDATED! MOVE IN READY!

Searching for that pinterest worthy home with all bells and whistles? This 1581 sq ft 3 bed, 2.5 bath beaut shows a 10! Feat: A/C, heated garage, new luxury laminate flooring on the main, newer carpet upstairs, updated paint, new stainless steel appliances, lighting, & more! Classic open concept layout w/ gas fireplace creates the ideal space for entertaining friends & family. Large west facing windows, 9' ceiling, granite countertops w/ corner pantry, main floor laundry, 2 pce bath, & access to the backyard. Upstairs brings additional 4 pce bath, linen storage, & 3 good sized bedrooms, including the primary bed w/ walk in closet & 5 pce ensuite! The basement is unfinished but space to add the 4th bedroom, rec room, or keep as is for ample storage. 22' x 24' heated garage fits most half ton trucks. Fully fenced & landscaped w/ no neighbours directly behind too! Blocks to multiple playgrounds & quick access to Hwy 2A & LRC. Great package, shows well.

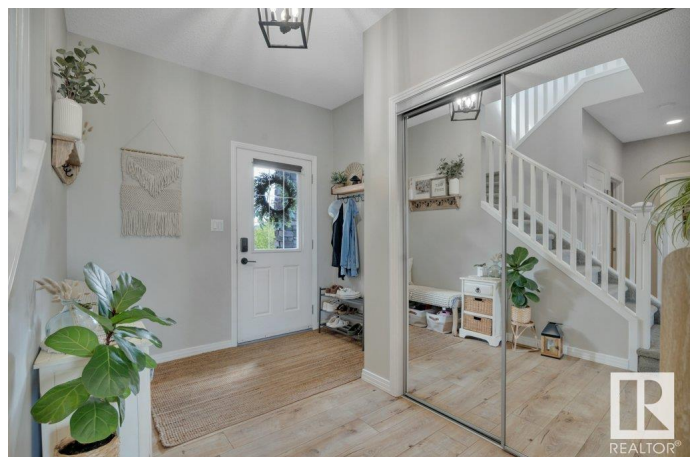
Built in 2013

Essential Information

MLS® # E4438170

Price \$479,900

Bedrooms 3



Bathrooms	2.50
Full Baths	2
Half Baths	1
Square Footage	1,581
Acres	0.00
Year Built	2013
Type	Single Family
Sub-Type	Detached Single Family
Style	2 Storey
Status	Active

Community Information

Address	530 Reynolds Wynd
Area	Leduc
Subdivision	Robinson
City	Leduc
County	ALBERTA
Province	AB
Postal Code	T9E 0T2

Amenities

Amenities	Air Conditioner, Ceiling 9 ft., Deck, Hot Water Natural Gas, Vinyl Windows, See Remarks
Parking	Double Garage Attached, Heated, Over Sized

Interior

Appliances	Air Conditioning-Central, Dishwasher-Built-In, Dryer, Garage Control, Garage Opener, Refrigerator, Stove-Electric, Washer, Window Coverings, Garage Heater
Heating	Forced Air-1, Natural Gas
Fireplace	Yes
Fireplaces	Corner
Stories	2
Has Basement	Yes
Basement	Full, Unfinished

Exterior

Exterior	Wood, Stone, Vinyl
Exterior Features	Airport Nearby, Landscaped, Playground Nearby, Public Transportation,

	Schools, Shopping Nearby
Roof	Asphalt Shingles
Construction	Wood, Stone, Vinyl
Foundation	Concrete Perimeter

Additional Information

Date Listed	May 23rd, 2025
Days on Market	13
Zoning	Zone 81

DATA IS DEEMED RELIABLE BUT IS NOT GUARANTEED ACCURATE BY THE REALTORS® ASSOCIATION OF EDMONTON. COPYRIGHT 2025 BY THE REALTORS® ASSOCIATION OF EDMONTON. ALL RIGHTS RESERVED. Trademarks are owned or controlled by the Canadian Real Estate Association (CREA) and identify real estate professionals who are members of CREA (REALTOR®, REALTORS®) and/or the quality of services they provide (MLS®, Multiple Listing Service®)

Listing information last updated on June 5th, 2025 at 7:17pm MDT