

## \$420,000 - 24 Aberdeen Crescent, Stony Plain

MLS® #E4438202

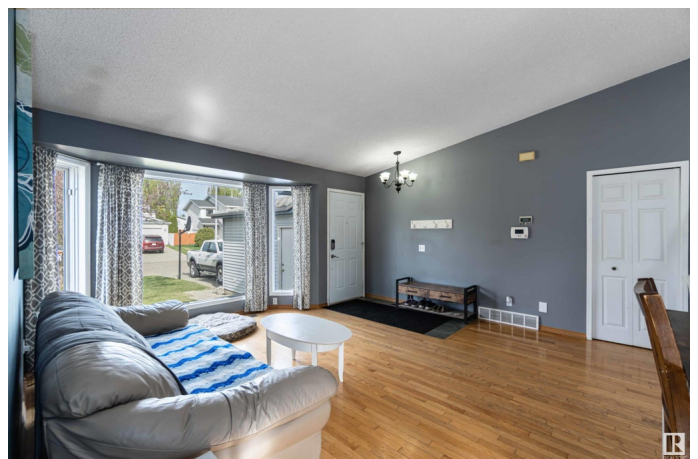
**\$420,000**

4 Bedroom, 2.00 Bathroom, 1,163 sqft

Single Family on 0.00 Acres

St. Andrews, Stony Plain, AB

Located in a mature, family-friendly neighborhood, this stunning home combines comfort, space, and convenience—just steps from schools, parks, and shopping. Upon entering, you™re welcomed into a spacious main floor featuring a bright living room, a generous dining area, and a well-appointed kitchen with ample cupboard and counter space. Vaulted ceilings enhance the open feel, creating a warm and inviting atmosphere. Upstairs, you™ll find three generously sized bedrooms, including a spacious primary retreat with direct access to a 4-piece bathroom featuring a jetted tub. One of the additional bedrooms boasts a walk-in closet, offering extra storage. The lower level offers a cozy family room complete with a wood-burning fireplace, fourth bedroom, and 3-piece bathroom—ideal for guests or a growing family. Head down to the basement for yet another large living space and a massive laundry/storage room. Outside is a spacious deck overlooking the fully fenced and landscaped corner lot and a double car garage.



Built in 1993

### Essential Information

MLS® # E4438202

Price \$420,000

|                |                        |
|----------------|------------------------|
| Bedrooms       | 4                      |
| Bathrooms      | 2.00                   |
| Full Baths     | 2                      |
| Square Footage | 1,163                  |
| Acres          | 0.00                   |
| Year Built     | 1993                   |
| Type           | Single Family          |
| Sub-Type       | Detached Single Family |
| Style          | 4 Level Split          |
| Status         | Active                 |

### **Community Information**

|             |                      |
|-------------|----------------------|
| Address     | 24 Aberdeen Crescent |
| Area        | Stony Plain          |
| Subdivision | St. Andrews          |
| City        | Stony Plain          |
| County      | ALBERTA              |
| Province    | AB                   |
| Postal Code | T7Z 1K4              |

### **Amenities**

|                |                                                         |
|----------------|---------------------------------------------------------|
| Amenities      | Deck, Detectors Smoke, No Smoking Home, Vaulted Ceiling |
| Parking Spaces | 4                                                       |
| Parking        | Double Garage Attached                                  |

### **Interior**

|              |                                                                                                                                                        |
|--------------|--------------------------------------------------------------------------------------------------------------------------------------------------------|
| Appliances   | Dishwasher-Built-In, Dryer, Fan-Ceiling, Garage Control, Garage Opener, Hood Fan, Refrigerator, Storage Shed, Stove-Electric, Washer, Window Coverings |
| Heating      | Forced Air-1, Natural Gas                                                                                                                              |
| Fireplace    | Yes                                                                                                                                                    |
| Fireplaces   | Brick Facing                                                                                                                                           |
| Stories      | 4                                                                                                                                                      |
| Has Basement | Yes                                                                                                                                                    |
| Basement     | Full, Finished                                                                                                                                         |

### **Exterior**

|                   |                                                                |
|-------------------|----------------------------------------------------------------|
| Exterior          | Wood, Stucco, Vinyl                                            |
| Exterior Features | Corner Lot, Fenced, Fruit Trees/Shrubs, Landscaped, Playground |

|              |                                  |
|--------------|----------------------------------|
|              | Nearby, Schools, Shopping Nearby |
| Roof         | Asphalt Shingles                 |
| Construction | Wood, Stucco, Vinyl              |
| Foundation   | Concrete Perimeter               |

### **Additional Information**

|                |                |
|----------------|----------------|
| Date Listed    | May 23rd, 2025 |
| Days on Market | 25             |
| Zoning         | Zone 91        |

DATA IS DEEMED RELIABLE BUT IS NOT GUARANTEED ACCURATE BY THE REALTORS® ASSOCIATION OF EDMONTON. COPYRIGHT 2025 BY THE REALTORS® ASSOCIATION OF EDMONTON. ALL RIGHTS RESERVED. Trademarks are owned or controlled by the Canadian Real Estate Association (CREA) and identify real estate professionals who are members of CREA (REALTOR®, REALTORS®) and/or the quality of services they provide (MLS®, Multiple Listing Service®)

Listing information last updated on June 17th, 2025 at 8:32am MDT