

\$250,000 - 60213 Rr 261, Rural Westlock County

MLS® #E4438256

\$250,000

3 Bedroom, 2.00 Bathroom, 1,520 sqft

Rural on 4.99 Acres

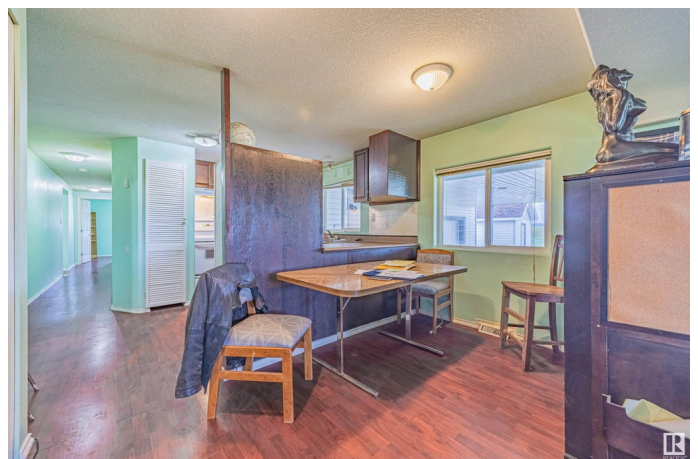
None, Rural Westlock County, AB

You will absolutely love the peace and serenity that country living brings and the best part is that you are less than 10 mins from Westlock. With over 1500 sq ft this 3 bedroom home was originally built on a 1988 mobile home frame and features 2 x 6 walls. This is an open concept home with a spacious living and dining area. Large primary has ensuite and access to back deck. The attached 24' x 28' garage is heated plus there is a 28' x 36' carport. The well was drilled in 2010. There is a "campsite" area that has access to water & power. Also a hydrant & trailer/motorhome dump. Power is underground. Home/carport are on 16" x 16" concrete pillars that are 5' deep. Garage sits on 5' concrete footing with w/concrete pilings beneath.

Built in 2010

Essential Information

MLS® #	E4438256
Price	\$250,000
Bedrooms	3
Bathrooms	2.00
Full Baths	2
Square Footage	1,520
Acres	4.99
Year Built	2010



Type	Rural
Sub-Type	Detached Single Family
Style	Bungalow
Status	Active

Community Information

Address	60213 Rr 261
Area	Rural Westlock County
Subdivision	None
City	Rural Westlock County
County	ALBERTA
Province	AB
Postal Code	T0G 0P0

Amenities

Features	No Animal Home, Parking-Extra
----------	-------------------------------

Interior

Interior Features	ensuite bathroom
Heating	Forced Air-1, Propane
Stories	1
Has Basement	Yes
Basement	None, No Basement

Exterior

Exterior	See Remarks
Exterior Features	Airport Nearby, Flat Site, Landscaped, Schools, Shopping Nearby
Construction	See Remarks
Foundation	See Remarks

Additional Information

Date Listed	May 23rd, 2025
Days on Market	17
Zoning	Zone 70

DATA IS DEEMED RELIABLE BUT IS NOT GUARANTEED ACCURATE BY THE REALTORS® ASSOCIATION OF EDMONTON. COPYRIGHT 2025 BY THE REALTORS® ASSOCIATION OF EDMONTON. ALL RIGHTS RESERVED. Trademarks are owned or controlled by the Canadian Real Estate Association (CREA) and identify real estate professionals who are members of CREA (REALTOR®, REALTORS®) and/or the quality of services they provide (MLS®, Multiple Listing Service®)

Listing information last updated on June 9th, 2025 at 1:32pm MDT