

## \$75,000 - 6869 Ad Astra Boulevard, Edmonton

MLS® #E4438928

**\$75,000**

0 Bedroom, 0.00 Bathroom,  
Business on 0.00 Acres

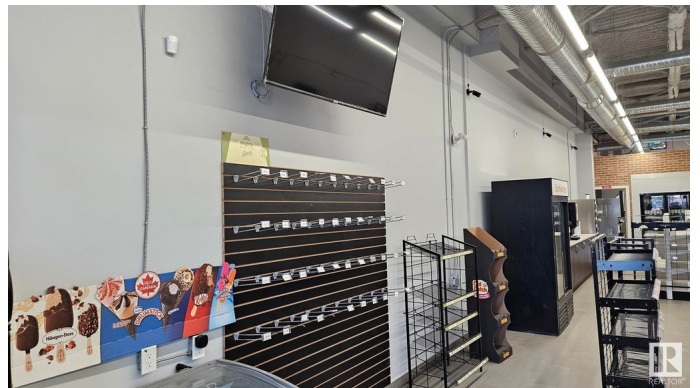
Griesbach, Edmonton, AB

Newer convenience store available for sale. This store is located in a community plaza of Griesbach where there are many apartment buildings and some still under construction behind the store. There are many townhouses, duplexes and residential detached homes near to the store, many are still under construction. As you can see the population are still growing at a fast pace around the community. The premises has a newer 7 customer service doors walk-in cooler, slush and coffee machines, three beverage/deli standing coolers, three cigarette display units with secured locks, 43 inch large screen TV and a floor safe. There is an exterior roller shutter shutting down at night to keep your property safe. The value of Leasehold Improvement, walk-in cooler and all the other equipment as seen in the store worth more than the listing price.

Built in 2018

### Essential Information

MLS® #	E4438928
Price	\$75,000
Bathrooms	0.00
Acres	0.00
Year Built	2018
Type	Business



Status                      Active

**Community Information**

Address                    6869 Ad Astra Boulevard  
Area                        Edmonton  
Subdivision               Griesbach  
City                        Edmonton  
County                    ALBERTA  
Province                  AB  
Postal Code               T5E 4G6

**Additional Information**

Date Listed                May 28th, 2025  
Days on Market          10  
Zoning                     Zone 27

DATA IS DEEMED RELIABLE BUT IS NOT GUARANTEED ACCURATE BY THE REALTORS® ASSOCIATION OF EDMONTON. COPYRIGHT 2025 BY THE REALTORS® ASSOCIATION OF EDMONTON. ALL RIGHTS RESERVED.Trademarks are owned or controlled by the Canadian Real Estate Association (CREA) and identify real estate professionals who are members of CREA (REALTOR®, REALTORS®) and/or the quality of services they provide (MLS®, Multiple Listing Service®)  
Listing information last updated on June 7th, 2025 at 5:33pm MDT