

\$82,000 - 207 9028 Jasper Avenue, Edmonton

MLS® #E4439222

\$82,000

1 Bedroom, 1.00 Bathroom, 669 sqft

Condo / Townhouse on 0.00 Acres

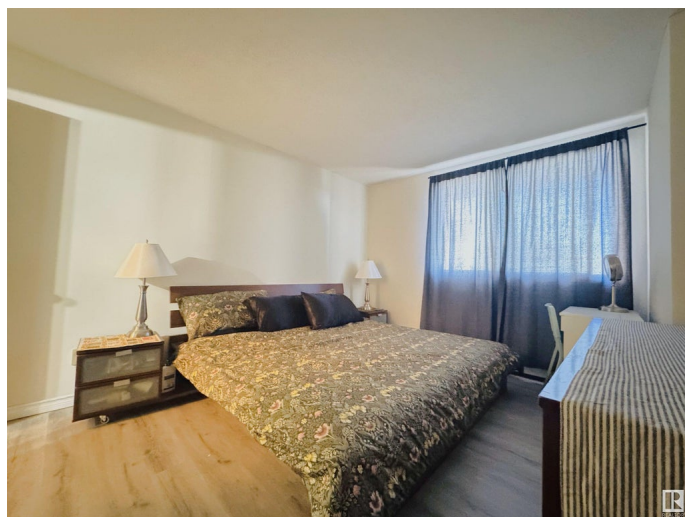
Boyle Street, Edmonton, AB

Prime Downtown Location! This bright and spacious 1-bedroom, 1-bath condo offers incredible value with recently updated flooring and sweeping River Valley views. Perfect for first-time buyers, students, professionals, or investors. Enjoy peace of mind with all utilities included â€“HEAT, WATER & ELECTRICITY â€“ plus the bonus of underground parking and a secure storage space. Steps from the Ice District, LRT, shopping, dining, nightlife, and River Valley trails. A fantastic opportunity in one of Edmontonâ€™s most desirable central communities.

Built in 1971

Essential Information

| | |
|----------------|------------------------|
| MLS® # | E4439222 |
| Price | \$82,000 |
| Bedrooms | 1 |
| Bathrooms | 1.00 |
| Full Baths | 1 |
| Square Footage | 669 |
| Acres | 0.00 |
| Year Built | 1971 |
| Type | Condo / Townhouse |
| Sub-Type | Apartment High Rise |
| Style | Single Level Apartment |
| Status | Active |



Community Information

| | |
|-------------|------------------------|
| Address | 207 9028 Jasper Avenue |
| Area | Edmonton |
| Subdivision | Boyle Street |
| City | Edmonton |
| County | ALBERTA |
| Province | AB |
| Postal Code | T5H 3Y6 |

Amenities

| | |
|-----------|-------------|
| Amenities | See Remarks |
| Parking | Underground |

Interior

| | |
|--------------|------------------------------|
| Appliances | Refrigerator, Stove-Electric |
| Heating | Baseboard, Electric |
| # of Stories | 11 |
| Stories | 1 |
| Has Basement | Yes |
| Basement | None, No Basement |

Exterior

| | |
|-------------------|---|
| Exterior | Concrete |
| Exterior Features | River View, Schools, Shopping Nearby, View Downtown |
| Roof | Tar & Gravel |
| Construction | Concrete |
| Foundation | Concrete Perimeter |

Additional Information

| | |
|----------------|----------------|
| Date Listed | May 29th, 2025 |
| Days on Market | 86 |
| Zoning | Zone 13 |
| Condo Fee | \$642 |

DATA IS DEEMED RELIABLE BUT IS NOT GUARANTEED ACCURATE BY THE REALTORS® ASSOCIATION OF EDMONTON. COPYRIGHT 2025 BY THE REALTORS® ASSOCIATION OF EDMONTON. ALL RIGHTS RESERVED. Trademarks are owned or controlled by the Canadian Real Estate Association (CREA) and identify real estate professionals who are members of CREA (REALTOR®, REALTORS®) and/or the quality of services they provide (MLS®, Multiple Listing Service®)

Listing information last updated on August 23rd, 2025 at 4:02am MDT