

\$847,300 - 241, 57303 Rge Rd 233, Rural Sturgeon County

MLS® #E4439223

\$847,300

5 Bedroom, 3.00 Bathroom, 1,836 sqft

Rural on 2.67 Acres

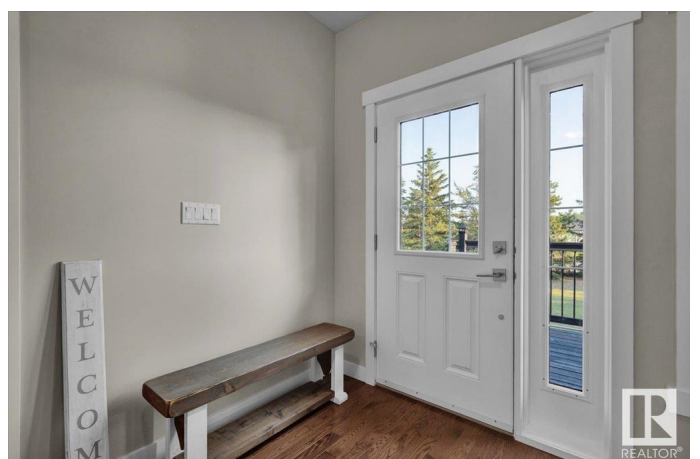
Woodridge_MSTU, Rural Sturgeon County, AB

This acreage will leave a lasting impression! Stunning 2011 Raised Bungalow w/a Walk-Out Basement on 2.67 acres located in Woodridge Estates, only 12mins N of Gibbons. 26x26 Attached Heated Garage w/ 15 1/2ft ceilings, mud room & storage room. An impressive main floor w/a grande open layout, vaulted ceilings, hardwood floors, modern glass railing & lots of natural light. Over 3000sq ft of living space & Central AC! The living room looks into the dream kitchen w/ granite counter tops, 36" gas stove, centre island w/ double sinks & eat-up bar. Large dining area w/ a garden door. 3 bedrooms, 4pc bath, private primary suite has a 6x10 walk-in closet, garden door, 5pc ensuite, deep soaker tub/double sinks. Finished walk-out basement offers 2 more BR, 4pc bath, laundry room w/ cabinets/counter top/sink/extra storage. Enjoy the large rec room for entertaining with a Dry Bar. Plus a 36x22 Heated Shop, 2 Overhead Doors. Incredible treed yard, private walking trails, raised gardens, sheds, invisible dog fence etc.

Built in 2011

Essential Information

MLS® # E4439223



Price	\$847,300
Bedrooms	5
Bathrooms	3.00
Full Baths	3
Square Footage	1,836
Acres	2.67
Year Built	2011
Type	Rural
Sub-Type	Detached Single Family
Style	Raised Bungalow
Status	Active

Community Information

Address	241, 57303 Rge Rd 233
Area	Rural Sturgeon County
Subdivision	Woodridge_MSTU
City	Rural Sturgeon County
County	ALBERTA
Province	AB
Postal Code	T0A 1N6

Amenities

Features	Air Conditioner, Bar, Fire Pit, Front Porch, No Smoking Home, Vaulted Ceiling, Vinyl Windows, Walkout Basement, 9 ft. Basement Ceiling
----------	--

Interior

Interior Features	ensuite bathroom
Heating	Forced Air-1, Natural Gas
Stories	2
Has Basement	Yes
Basement	Full, Finished

Exterior

Exterior	Wood
Exterior Features	Corner Lot, Fruit Trees/Shrubs, Golf Nearby, Landscaped, Private Setting, Treed Lot, Vegetable Garden
Construction	Wood
Foundation	Concrete Perimeter

Additional Information

Date Listed May 29th, 2025

Days on Market 9

Zoning Zone 60

DATA IS DEEMED RELIABLE BUT IS NOT GUARANTEED ACCURATE BY THE REALTORS® ASSOCIATION OF EDMONTON. COPYRIGHT 2025 BY THE REALTORS® ASSOCIATION OF EDMONTON. ALL RIGHTS RESERVED. Trademarks are owned or controlled by the Canadian Real Estate Association (CREA) and identify real estate professionals who are members of CREA (REALTOR®, REALTORS®) and/or the quality of services they provide (MLS®, Multiple Listing Service®)

Listing information last updated on June 7th, 2025 at 7:02am MDT