

\$424,000 - 202 53320 Rge Road 30, Rural Parkland County

MLS® #E4439621

\$424,000

3 Bedroom, 1.00 Bathroom, 1,062 sqft
Rural on 3.00 Acres

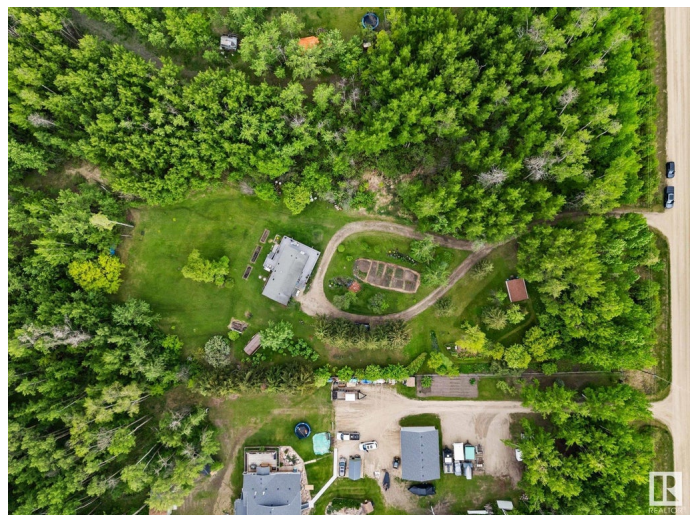
Meso West I, Rural Parkland County, AB

Looking for the quiet life? This acreage is for you! Beautifully landscaped on 3 acres. Totally private! Lovely home with a full basement (unfinished) and room for storage. 3 beds, 1 bath with space to expand. Beautiful gardens, trees and nature all at you doorstep. Back deck faces south. A perfect place to have your morning coffee and watch the deer. Out front has a beautiful garden, ready for all your tomatoes & veggies. Pull around drive for parking. Bonus is a Bunkie! 2 beds and a sitting room. Close to the power line, so easy to hook up for the kids on the weekend. Upgrades include: drilled well in 2015, New furnace, HWT, pressure tank & water filtration system in 2020. 2 sump pumps. All new windows in 2021. 2023 had new vapor barrier system in basement & re-graded. Plenty of room to build a garage. Close to Stony Plain & Spruce. Your Oasis awaits.

Built in 1976

Essential Information

| | |
|-----------|-----------|
| MLS® # | E4439621 |
| Price | \$424,000 |
| Bedrooms | 3 |
| Bathrooms | 1.00 |



| | |
|----------------|------------------------|
| Full Baths | 1 |
| Square Footage | 1,062 |
| Acres | 3.00 |
| Year Built | 1976 |
| Type | Rural |
| Sub-Type | Detached Single Family |
| Style | Bungalow |
| Status | Active |

Community Information

| | |
|-------------|-----------------------|
| Address | 202 53320 Rge Road 30 |
| Area | Rural Parkland County |
| Subdivision | Meso West I |
| City | Rural Parkland County |
| County | ALBERTA |
| Province | AB |
| Postal Code | T7Y 0E2 |

Amenities

| | |
|----------|---------------------------------------|
| Features | Deck, No Animal Home, No Smoking Home |
|----------|---------------------------------------|

Interior

| | |
|--------------|---------------------------|
| Heating | Forced Air-1, Natural Gas |
| Fireplace | Yes |
| Stories | 1 |
| Has Basement | Yes |
| Basement | Full, Unfinished |

Exterior

| | |
|-------------------|--------------------------------------------------------------------|
| Exterior Features | Backs Onto Park/Trees, Fruit Trees/Shrubs, Golf Nearby, Landscaped |
| Foundation | Concrete Perimeter |

Additional Information

| | |
|----------------|----------------|
| Date Listed | May 30th, 2025 |
| Days on Market | 23 |
| Zoning | Zone 70 |

DATA IS DEEMED RELIABLE BUT IS NOT GUARANTEED ACCURATE BY THE REALTORS® ASSOCIATION OF EDMONTON. COPYRIGHT 2025 BY THE REALTORS® ASSOCIATION OF EDMONTON. ALL RIGHTS RESERVED. Trademarks are owned or controlled by the Canadian Real Estate Association (CREA) and identify real estate professionals who are members of CREA (REALTOR®, REALTORS®) and/or the quality of services they

provide (MLS®®, Multiple Listing Service®®)
Listing information last updated on June 22nd, 2025 at 7:02pm MDT