

\$39,900 - 5302 54 Avenue, St. Paul Town

MLS® #E4439872

\$39,900

2 Bedroom, 1.00 Bathroom, 1,073 sqft
Single Family on 0.00 Acres

St. Paul Town, St. Paul Town, AB

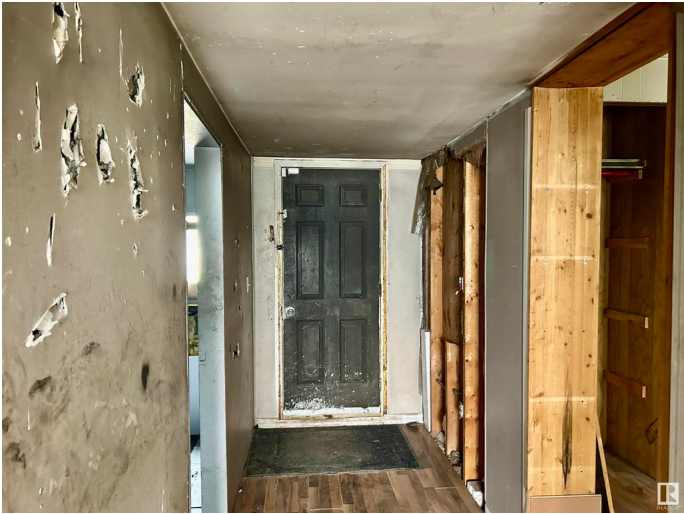
Manufactured Home in a Mature Neighborhood - This home is perfect for the handyman looking to add their personal touch and make it their own home from the ground up. Families will appreciate the convenience of school bus service, ensuring a hassle-free commute to and from local schools. Plus, the residence is just a short walk from the scenic Iron Horse Trail and a community playground, providing endless opportunities for outdoor activities and community engagement. Affordable for a variety of future options.

Built in 1976

Essential Information

MLS® #	E4439872
Price	\$39,900
Bedrooms	2
Bathrooms	1.00
Full Baths	1
Square Footage	1,073
Acres	0.00
Year Built	1976
Type	Single Family
Sub-Type	Detached Single Family
Style	Bungalow
Status	Active

Community Information



Address	5302 54 Avenue
Area	St. Paul Town
Subdivision	St. Paul Town
City	St. Paul Town
County	ALBERTA
Province	AB
Postal Code	T0A 3A1

Amenities

Amenities	Off Street Parking, Front Porch
Parking	Single Garage Attached

Interior

Appliances	See Remarks
Heating	Forced Air-1, Natural Gas
Stories	1
Has Basement	Yes
Basement	None, No Basement

Exterior

Exterior	Vinyl
Exterior Features	Back Lane, Low Maintenance Landscape
Roof	Asphalt Shingles
Construction	Vinyl
Foundation	Block

Additional Information

Date Listed	June 2nd, 2025
Days on Market	5
Zoning	Zone 60
RE / Bank Owned	Yes

DATA IS DEEMED RELIABLE BUT IS NOT GUARANTEED ACCURATE BY THE REALTORS® ASSOCIATION OF EDMONTON. COPYRIGHT 2025 BY THE REALTORS® ASSOCIATION OF EDMONTON. ALL RIGHTS RESERVED. Trademarks are owned or controlled by the Canadian Real Estate Association (CREA) and identify real estate professionals who are members of CREA (REALTOR®, REALTORS®) and/or the quality of services they provide (MLS®, Multiple Listing Service®)

Listing information last updated on June 7th, 2025 at 4:02pm MDT