

\$99,000 - Na, Wetaskiwin

MLS® #E4439927

\$99,000

0 Bedroom, 0.00 Bathroom,
Business on 0.00 Acres

Highway Central, Wetaskiwin, AB

Business for Sale: Fantastic opportunity for Turnkey Business Vape Shop. Located in a high-traffic area with great visibility. Strong presence in the area, surrounded by Subway, Edo, Domino's Pizza, with Strong Foot traffic this business has huge potential to grow. With reasonable rent (\$2300+OC) the business allows for a huge margin and financial stability. Please do not approach the staff as they are not authorized to discuss the details. Act now to secure your future and own a thriving business. Buyer may add Convenience Store too with approval from city .

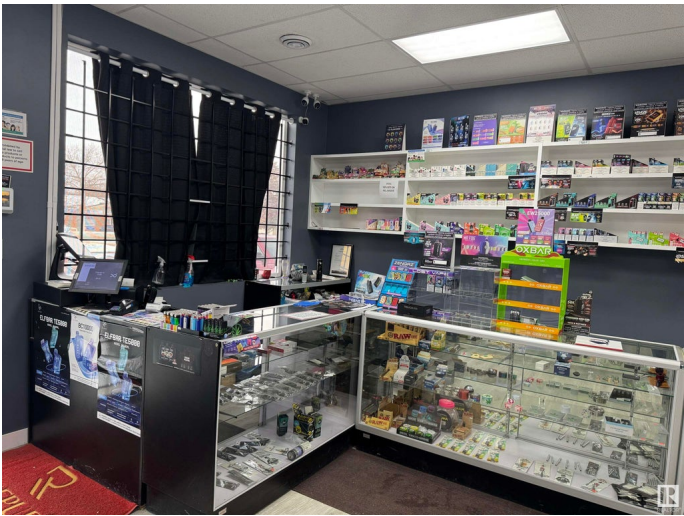
Built in 2005

Essential Information

MLS® #	E4439927
Price	\$99,000
Bathrooms	0.00
Acres	0.00
Year Built	2005
Type	Business
Status	Active

Community Information

Address	Na
Area	Wetaskiwin
Subdivision	Highway Central



City	Wetaskiwin
County	ALBERTA
Province	AB
Postal Code	T9A 1V8

Exterior

Exterior	Wood Frame
Construction	Wood Frame

Additional Information

Date Listed	June 2nd, 2025
Days on Market	56
Zoning	Zone 80

DATA IS DEEMED RELIABLE BUT IS NOT GUARANTEED ACCURATE BY THE REALTORS® ASSOCIATION OF EDMONTON. COPYRIGHT 2025 BY THE REALTORS® ASSOCIATION OF EDMONTON. ALL RIGHTS RESERVED. Trademarks are owned or controlled by the Canadian Real Estate Association (CREA) and identify real estate professionals who are members of CREA (REALTOR®, REALTORS®) and/or the quality of services they provide (MLS®, Multiple Listing Service®)

Listing information last updated on July 28th, 2025 at 8:47am MDT