

\$339,900 - 5110 146 Avenue, Edmonton

MLS® #E4440064

\$339,900

3 Bedroom, 2.50 Bathroom, 1,378 sqft

Condo / Townhouse on 0.00 Acres

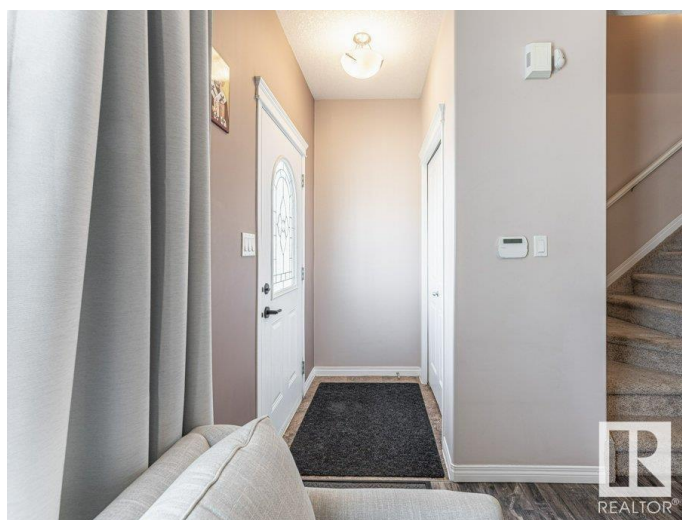
Casselman, Edmonton, AB

The DETACHED 2 Story free standing townhome complete with an Attached Garage. It's in a Great location, close to shopping, LRT Station, bus stop, hospital and other amenities. The open concept main floor has Gleaming Hardwood floors in Living room and Dining room area that's open into to kitchen, which features dark maple cabinets, solid ceramic flooring and New black appliances. There's a main floor half bath beside attached garage entrance. Upstairs there are 3 large sized bedrooms, the Master bedroom having a 4 piece en-suite bathroom and a Large walk-in closet. The homes shows great. Good price for this home with an Attached garage.

Built in 2009

Essential Information

MLS® #	E4440064
Price	\$339,900
Bedrooms	3
Bathrooms	2.50
Full Baths	2
Half Baths	1
Square Footage	1,378
Acres	0.00
Year Built	2009
Type	Condo / Townhouse



Sub-Type	Half Duplex
Style	2 Storey
Status	Active

Community Information

Address	5110 146 Avenue
Area	Edmonton
Subdivision	Casselman
City	Edmonton
County	ALBERTA
Province	AB
Postal Code	T5A 5B7

Amenities

Amenities	Closet Organizers, Deck, No Animal Home, No Smoking Home, Parking-Extra, Secured Parking, Vinyl Windows
Parking	Single Garage Attached

Interior

Interior Features	ensuite bathroom
Appliances	Dryer, Garage Control, Garage Opener, Refrigerator, Stove-Electric, Washer
Heating	Forced Air-1, Natural Gas
Stories	2
Has Basement	Yes
Basement	Full, Partially Finished

Exterior

Exterior	Wood, Stucco
Exterior Features	Landscaped, Playground Nearby, Public Transportation, Shopping Nearby, See Remarks
Roof	Asphalt Shingles
Construction	Wood, Stucco
Foundation	Concrete Perimeter

Additional Information

Date Listed	June 3rd, 2025
Days on Market	3
Zoning	Zone 02
Condo Fee	\$91

DATA IS DEEMED RELIABLE BUT IS NOT GUARANTEED ACCURATE BY THE REALTORS® ASSOCIATION OF EDMONTON. COPYRIGHT 2025 BY THE REALTORS® ASSOCIATION OF EDMONTON. ALL RIGHTS RESERVED.Trademarks are owned or controlled by the Canadian Real Estate Association (CREA) and identify real estate professionals who are members of CREA (REALTOR®, REALTORS®) and/or the quality of services they provide (MLS®, Multiple Listing Service®)

Listing information last updated on June 6th, 2025 at 1:02pm MDT