

\$389,900 - 52 Parkview Crescent, Calmar

MLS® #E4440641

\$389,900

3 Bedroom, 2.50 Bathroom, 1,100 sqft

Single Family on 0.00 Acres

Calmar, Calmar, AB

UNIQUE PROPERTY! This vibrant 4-level split is tucked in a friendly cres, backs onto park & offers 2136 sqft TOTAL developed living space! The thoughtfully updated interior features engineered HW floors, skylight, lrg windows, modern lighting, & cozy gas FP. The kitchen boasts custom cabinets, granite counters, island, & S/S appliancesâ€”perfect for meals & entertaining. Just a few steps up, you'll find a generous WI pantry, stylish 2pc bath, laundry, & spacious primary suite w/ huge WI closet & private 3pc ensuite. The lower levels offers a warm & inviting family rm, 2 bedrooms, 4pc bath, & fully finished basement w/ a lrg rec room, & plenty of storage. The outdoor space is a true retreat! The covered sunroom welcomes you to the landscaped yard complete w/ pergola & deck. Need more room to work or play? The 16' x 22' heated shop is ideal for an office, studio, gym, or hangout zone. Plusâ€”a heated dbl attached garage for your comfort year-round. This is not just a homeâ€”it's a lifestyle.

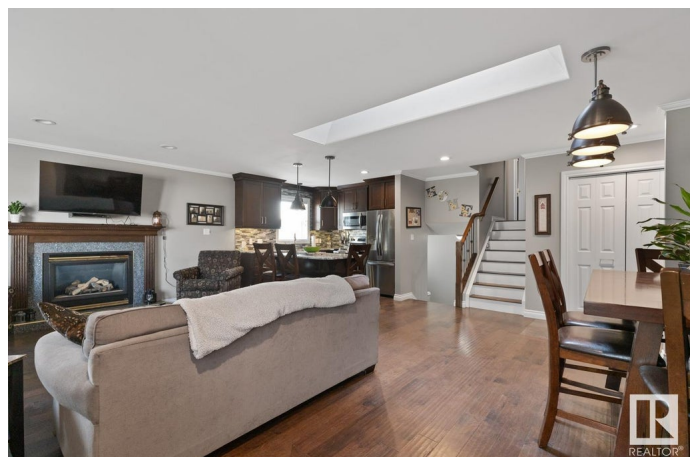
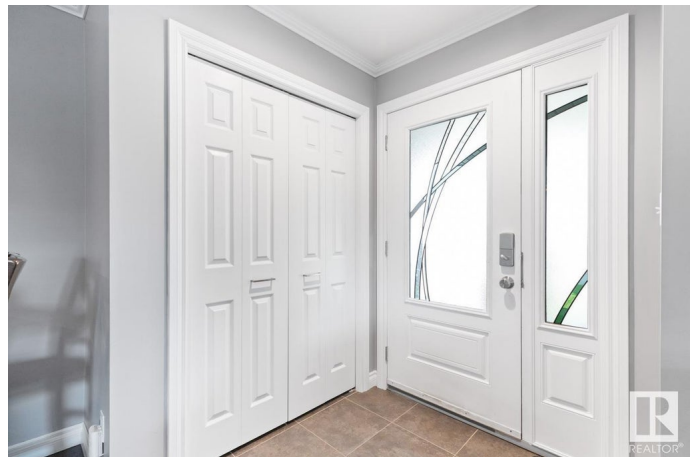
Built in 1992

Essential Information

MLS® # E4440641

Price \$389,900

Bedrooms 3



Bathrooms	2.50
Full Baths	2
Half Baths	1
Square Footage	1,100
Acres	0.00
Year Built	1992
Type	Single Family
Sub-Type	Detached Single Family
Style	4 Level Split
Status	Active

Community Information

Address	52 Parkview Crescent
Area	Calmar
Subdivision	Calmar
City	Calmar
County	ALBERTA
Province	AB
Postal Code	T0C 0V0

Amenities

Amenities	Deck, Vinyl Windows, Workshop, See Remarks
Parking	Double Garage Attached, Heated, Insulated

Interior

Interior Features	ensuite bathroom
Appliances	Dishwasher-Built-In, Dryer, Microwave Hood Fan, Refrigerator, Stove-Electric, Washer, Window Coverings, See Remarks
Heating	Forced Air-1, Natural Gas
Fireplace	Yes
Fireplaces	Mantel
Stories	4
Has Basement	Yes
Basement	Full, Finished

Exterior

Exterior	Wood, Vinyl
Exterior Features	Backs Onto Park/Trees, Fenced, Flat Site, Landscaped, Playground Nearby, Schools

Roof	Asphalt Shingles
Construction	Wood, Vinyl
Foundation	Concrete Perimeter

Additional Information

Date Listed	June 5th, 2025
Days on Market	2
Zoning	Zone 92

DATA IS DEEMED RELIABLE BUT IS NOT GUARANTEED ACCURATE BY THE REALTORS® ASSOCIATION OF EDMONTON. COPYRIGHT 2025 BY THE REALTORS® ASSOCIATION OF EDMONTON. ALL RIGHTS RESERVED.Trademarks are owned or controlled by the Canadian Real Estate Association (CREA) and identify real estate professionals who are members of CREA (REALTOR®, REALTORS®) and/or the quality of services they provide (MLS®, Multiple Listing Service®)

Listing information last updated on June 7th, 2025 at 12:17pm MDT