

\$335,000 - 10403 137 Avenue, Edmonton

MLS® #E4440918

\$335,000

4 Bedroom, 2.00 Bathroom, 1,069 sqft

Single Family on 0.00 Acres

Rosslyn, Edmonton, AB

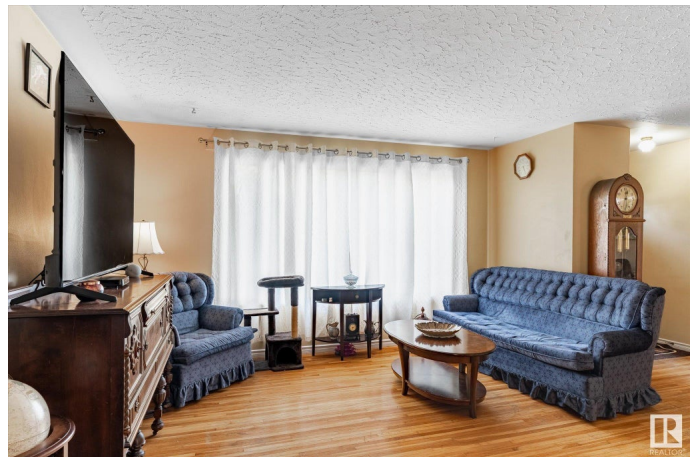
Charming Bungalow in Rosslyn. Welcome to this solid, well-loved bungalow in the heart of Rosslyn - a friendly, established neighbourhood in north Edmonton. This home has great bones and timeless character, offering 3 comfortable bedrooms on the main floor and a practical layout that's easy to make your own. The sunny main level features original hardwood, a bright living room, and a spacious kitchen beside the dining room that's perfect for gathering with family or friends. Downstairs, you'll find a second kitchen, large living space, 3 piece bathroom, 4th bedroom - ideal for multi-generational living, or just extra room to spread out. Laundry, utility room and cold storage tucked away there too. The backyard is generous and fully fenced, with 2 sheds and space to garden, play, or relax. There's also a detached garage and extra parking out back. Whether you're a first-time buyer, investor, or someone looking to downsize into a walkable neighbourhood with schools, shopping, and transit nearby, this works!

Built in 1961

Essential Information

MLS® # E4440918

Price \$335,000



Bedrooms	4
Bathrooms	2.00
Full Baths	2
Square Footage	1,069
Acres	0.00
Year Built	1961
Type	Single Family
Sub-Type	Detached Single Family
Style	Bungalow
Status	Active

Community Information

Address	10403 137 Avenue
Area	Edmonton
Subdivision	Rosslyn
City	Edmonton
County	ALBERTA
Province	AB
Postal Code	T6E 1Y9

Amenities

Amenities	Deck, Gazebo, Hot Water Natural Gas
Parking Spaces	4
Parking	Double Garage Detached, Parking Pad Cement/Paved

Interior

Appliances	Dryer, Storage Shed, Washer, Refrigerators-Two, Stoves-Two
Heating	Forced Air-1, Natural Gas
Stories	2
Has Basement	Yes
Basement	Full, Partially Finished

Exterior

Exterior	Wood, Stucco
Exterior Features	Fenced, Low Maintenance Landscape, Playground Nearby, Public Transportation, Schools, Shopping Nearby
Roof	Asphalt Shingles
Construction	Wood, Stucco
Foundation	Concrete Perimeter

School Information

Elementary	Lauderdale School
Middle	Rosslyn School

Additional Information

Date Listed	June 6th, 2025
Days on Market	1
Zoning	Zone 01

DATA IS DEEMED RELIABLE BUT IS NOT GUARANTEED ACCURATE BY THE REALTORS® ASSOCIATION OF EDMONTON. COPYRIGHT 2025 BY THE REALTORS® ASSOCIATION OF EDMONTON. ALL RIGHTS RESERVED.Trademarks are owned or controlled by the Canadian Real Estate Association (CREA) and identify real estate professionals who are members of CREA (REALTOR®, REALTORS®) and/or the quality of services they provide (MLS®, Multiple Listing Service®)

Listing information last updated on June 7th, 2025 at 4:02pm MDT