

\$349,900 - 2013 Lefebvre Place, Cold Lake

MLS® #E4442533

\$349,900

4 Bedroom, 3.00 Bathroom, 1,063 sqft

Single Family on 0.00 Acres

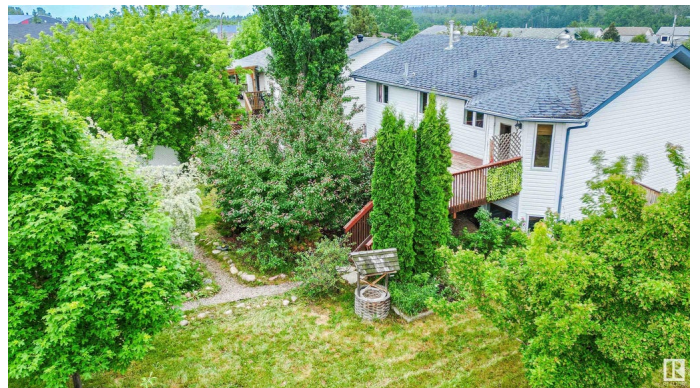
Lefebvre Heights, Cold Lake, AB

In a quiet crescent in Lefebvre Place, with a backyard that resembles a small park, with mature trees & fruits trees, a fire pit area, & an enclosed gazebo, ready for assembly, the home has a large 14'x16' back deck overlooking the park-like yard, wrapped in with a 6' privacy fence. The home has 3 bedrooms upstairs, all replaced with vinyl plank flooring, with solid hardwood in the living room & dining area. There is a large island in the kitchen, able to comfortably sit 5 or more. The master bedroom in the home has a large 7' x 8' ensuite with a 7' x 8' walk-in closet. Downstairs there is a spacious family room, another bedroom, & another 3/4 bath. The home has direct access into the garage, so even in the Winter, you can drive into the garage & take your groceries directly into your home. The shingles need replaced, & there are about 7 boxes of vinyl plank to do the stairs. A little TLC & this could be a beautiful home for your family with an exceptional private yard. Plumbed for in-floor heat. Jet Tub.

Built in 2001

Essential Information

MLS® #	E4442533
Price	\$349,900
Bedrooms	4



Bathrooms	3.00
Full Baths	3
Square Footage	1,063
Acres	0.00
Year Built	2001
Type	Single Family
Sub-Type	Detached Single Family
Style	Bi-Level
Status	Active

Community Information

Address	2013 Lefebvre Place
Area	Cold Lake
Subdivision	Lefebvre Heights
City	Cold Lake
County	ALBERTA
Province	AB
Postal Code	T9M 1K3

Amenities

Amenities	Closet Organizers, Deck, Detectors Smoke, Fire Pit, Hot Water Natural Gas, Parking-Plug-Ins, Secured Parking, Storage-In-Suite, Vinyl Windows, See Remarks
Parking Spaces	4
Parking	Double Garage Attached, Front Drive Access, Insulated, Parking Pad Cement/Paved

Interior

Interior Features	ensuite bathroom
Appliances	Dishwasher-Built-In, Dryer, Microwave Hood Fan, Refrigerator, Stove-Electric, Washer
Heating	Forced Air-1, Natural Gas
Stories	2
Has Basement	Yes
Basement	Full, Finished

Exterior

Exterior	Wood, Vinyl
Exterior Features	Cul-De-Sac, Fenced, Flat Site, Fruit Trees/Shrubs, Landscaped, Level Land, Low Maintenance Landscape, Playground Nearby, Public

Transportation, Schools, Shopping Nearby, See Remarks

Lot Description	30'x148'
Roof	Asphalt Shingles
Construction	Wood, Vinyl
Foundation	Concrete Perimeter

School Information

Elementary	Cold Lake Elementary
Middle	Nelson Heights
High	Cold Lake High School

Additional Information

Date Listed	June 15th, 2025
Days on Market	15
Zoning	Zone 60

DATA IS DEEMED RELIABLE BUT IS NOT GUARANTEED ACCURATE BY THE REALTORS® ASSOCIATION OF EDMONTON. COPYRIGHT 2025 BY THE REALTORS® ASSOCIATION OF EDMONTON. ALL RIGHTS RESERVED. Trademarks are owned or controlled by the Canadian Real Estate Association (CREA) and identify real estate professionals who are members of CREA (REALTOR®, REALTORS®) and/or the quality of services they provide (MLS®, Multiple Listing Service®)

Listing information last updated on June 30th, 2025 at 6:17pm MDT