

\$209,900 - 529 12002 Twp Rd 605, Rural St. Paul County

MLS® #E4443017

\$209,900

2 Bedroom, 1.00 Bathroom, 784 sqft

Rural on 0.61 Acres

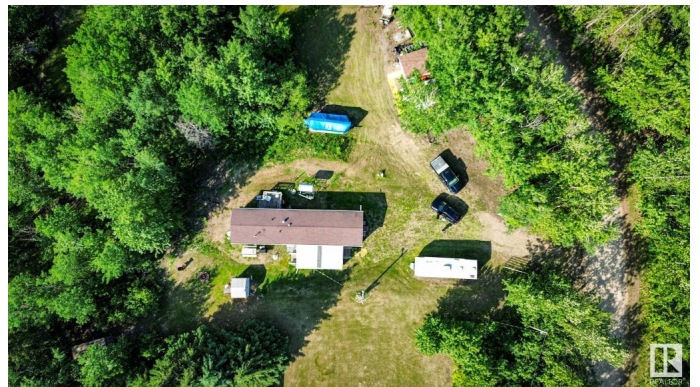
Plateau Estate, Rural St. Paul County, AB

Welcome to your 4 season lake getaway in Plateau Estates at Floatingstone Lake. Sitting on 0.61 acres this 2 bed 1 bath mobile home offers cozy year-round living or the perfect seasonal escape. The open concept layout features an L shaped kitchen, spacious living area and bedrooms on opposite ends for added privacy. Step out onto the covered south facing deck and soak up the peaceful surroundings. Outside you'll find a fire pit area, two sheds an outhouse, RV hookups and a low maintenance yard with a gated entrance for added security. Pontoon boat, holiday trailer and riding mower all included. Plus enjoy easy access to the Boyne Lake Store for gas and convenience items, boat launch and a household waste area close by. Just bring your bags and enjoy what Floatingstone Lake has to offer.

Built in 2008

Essential Information

MLS® #	E4443017
Price	\$209,900
Bedrooms	2
Bathrooms	1.00
Full Baths	1
Square Footage	784
Acres	0.61



Year Built	2008
Type	Rural
Sub-Type	Detached Single Family
Style	Bungalow
Status	Active

Community Information

Address	529 12002 Twp Rd 605
Area	Rural St. Paul County
Subdivision	Plateau Estate
City	Rural St. Paul County
County	ALBERTA
Province	AB
Postal Code	T0A 0C0

Amenities

Features	Deck, Fire Pit, Front Porch, Lake Privileges, No Animal Home
----------	--

Interior

Heating	Forced Air-1, Oil
Stories	1
Has Basement	Yes
Basement	None, No Basement

Exterior

Exterior	Wood
Exterior Features	Hillside, Low Maintenance Landscape
Construction	Wood
Foundation	Block

Additional Information

Date Listed	June 17th, 2025
Days on Market	46
Zoning	Zone 60

DATA IS DEEMED RELIABLE BUT IS NOT GUARANTEED ACCURATE BY THE REALTORS® ASSOCIATION OF EDMONTON. COPYRIGHT 2025 BY THE REALTORS® ASSOCIATION OF EDMONTON. ALL RIGHTS RESERVED. Trademarks are owned or controlled by the Canadian Real Estate Association (CREA) and identify real estate professionals who are members of CREA (REALTOR®, REALTORS®) and/or the quality of services they provide (MLS®, Multiple Listing Service®)

Listing information last updated on August 2nd, 2025 at 12:02pm MDT