

\$672,000 - 10462 144 Street, Edmonton

MLS® #E4443127

\$672,000

4 Bedroom, 3.50 Bathroom, 1,764 sqft

Single Family on 0.00 Acres

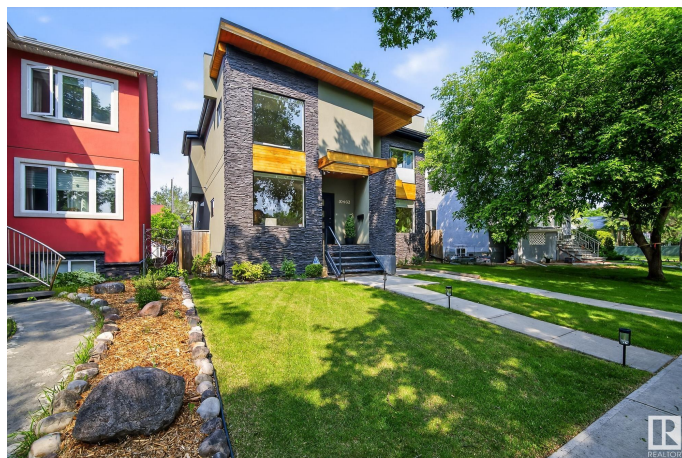
Grovenor, Edmonton, AB

This half duplex is tucked along a quiet, tree-lined street and features tall ceilings, an open-concept layout, and a cozy living room that opens onto the backyard. The Pinterest-ready galley kitchen boasts stainless steel appliances, a gas range, and a built-in microwave-oven. A corner gas fireplace provides a stylish and functional separation between the kitchen and living room. Upstairs, you'll find three bedrooms, including a spacious primary suite with a five-piece ensuite. The fully finished basement offers a private master suite with its own jetted tub, plus a bonus room—perfect for a home office, gym, or media space. Outside, the yard is fully fenced and landscaped, with a detached garage to keep your car out of the snow. Built using advanced SIPS (Structural Insulated Panels) technology, this home offers superior energy efficiency and durability.

Built in 2013

Essential Information

MLS® #	E4443127
Price	\$672,000
Bedrooms	4
Bathrooms	3.50
Full Baths	3
Half Baths	1



Square Footage	1,764
Acres	0.00
Year Built	2013
Type	Single Family
Sub-Type	Half Duplex
Style	2 Storey
Status	Active

Community Information

Address	10462 144 Street
Area	Edmonton
Subdivision	Grovenor
City	Edmonton
County	ALBERTA
Province	AB
Postal Code	T5N 2V4

Amenities

Amenities	Deck, Detectors Smoke, Infill Property
Parking	Double Garage Detached

Interior

Interior Features	ensuite bathroom
Appliances	Air Conditioning-Central, Dishwasher-Built-In, Dryer, Hood Fan, Oven-Microwave, Refrigerator, Stove-Gas, Washer
Heating	Forced Air-1, Natural Gas
Fireplace	Yes
Fireplaces	Corner
Stories	3
Has Basement	Yes
Basement	Full, Finished

Exterior

Exterior	Steel, Stone, Stucco
Exterior Features	Landscaped
Roof	Asphalt Shingles
Construction	Steel, Stone, Stucco
Foundation	Concrete Perimeter

School Information

Elementary	Grovenor School
Middle	Westminster School
High	Ross Sheppard School

Additional Information

Date Listed	June 19th, 2025
Days on Market	16
Zoning	Zone 21

DATA IS DEEMED RELIABLE BUT IS NOT GUARANTEED ACCURATE BY THE REALTORS® ASSOCIATION OF EDMONTON. COPYRIGHT 2025 BY THE REALTORS® ASSOCIATION OF EDMONTON. ALL RIGHTS RESERVED. Trademarks are owned or controlled by the Canadian Real Estate Association (CREA) and identify real estate professionals who are members of CREA (REALTOR®, REALTORS®) and/or the quality of services they provide (MLS®, Multiple Listing Service®)

Listing information last updated on July 5th, 2025 at 8:47am MDT