

# \$439,000 - 149 Spruce Gardens Crescent, Spruce Grove

MLS® #E4443183

**\$439,000**

3 Bedroom, 2.50 Bathroom, 1,597 sqft

Single Family on 0.00 Acres

Spruce Ridge, Spruce Grove, AB

Welcome to this beautiful 3-bedroom, 3-bathroom home in the desirable community of Spruce Ridge! This well-designed, open-concept layout backs directly onto Spruce Ridge Park, offering scenic views and added privacy. The bright and spacious main floor features a modern kitchen with stainless steel appliances, granite countertops, a large island, and a walk-in pantry. The adjacent dining area opens to the back deck—perfect for relaxing or entertaining. Enjoy the cozy gas fireplace in the sun-filled living room. Upstairs, the primary suite offers a walk-in closet and a 4-piece ensuite. Youâ€™ll also love the convenience of second-floor laundry and two additional well-sized bedrooms. The basement is undeveloped and ready for your personal touch. A double attached garage provides plenty of parking and storage. Ideally located near schools, parks, shopping, the Tri Leisure Centre, and walking trails, with quick access to both Highway 16 and 16A. This home has it all—comfort, function, and location!

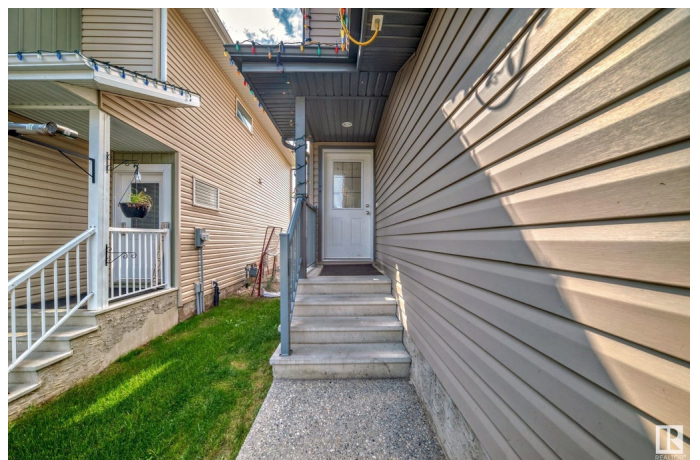
Built in 2015

## Essential Information

MLS® # E4443183

Price \$439,000

Bedrooms 3



Bathrooms	2.50
Full Baths	2
Half Baths	1
Square Footage	1,597
Acres	0.00
Year Built	2015
Type	Single Family
Sub-Type	Half Duplex
Style	2 Storey
Status	Active

### Community Information

Address	149 Spruce Gardens Crescent
Area	Spruce Grove
Subdivision	Spruce Ridge
City	Spruce Grove
County	ALBERTA
Province	AB
Postal Code	T7X 0J9

### Amenities

Amenities	Deck
Parking	Double Garage Attached

### Interior

Interior Features	ensuite bathroom
Appliances	Dishwasher-Built-In, Dryer, Garage Control, Garage Opener, Microwave Hood Fan, Refrigerator, Stove-Electric, Washer
Heating	Forced Air-1, Natural Gas
Stories	2
Has Basement	Yes
Basement	Full, Unfinished

### Exterior

Exterior	Wood, Vinyl
Exterior Features	Backs Onto Park/Trees, Fenced, Golf Nearby, Landscaped, Level Land, No Back Lane, Playground Nearby, Schools, Shopping Nearby
Roof	Asphalt Shingles
Construction	Wood, Vinyl

Foundation                      Concrete Perimeter

**Additional Information**

Date Listed                      June 18th, 2025  
Days on Market                7  
Zoning                              Zone 91

DATA IS DEEMED RELIABLE BUT IS NOT GUARANTEED ACCURATE BY THE REALTORS® ASSOCIATION OF EDMONTON. COPYRIGHT 2025 BY THE REALTORS® ASSOCIATION OF EDMONTON. ALL RIGHTS RESERVED.Trademarks are owned or controlled by the Canadian Real Estate Association (CREA) and identify real estate professionals who are members of CREA (REALTOR®, REALTORS®) and/or the quality of services they provide (MLS®, Multiple Listing Service®)  
Listing information last updated on June 25th, 2025 at 4:32pm MDT