

## \$259,000 - 201 10003 87 Avenue, Edmonton

MLS® #E4443277

**\$259,000**

2 Bedroom, 1.00 Bathroom, 846 sqft

Condo / Townhouse on 0.00 Acres

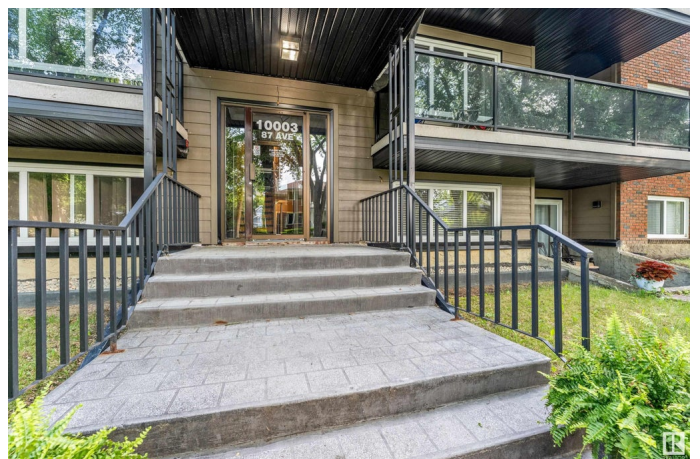
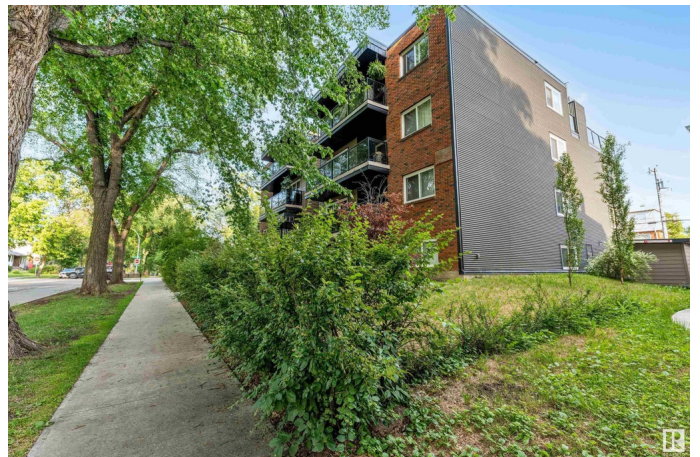
Strathcona, Edmonton, AB

FANTASTIC LOCATION! Welcome to Strathcona, one of Edmonton's most dynamic and sought-after neighborhoods. This stylishly updated upper-level condo offers 2 bedrooms and 1 bathroom and is completely move-in ready. Featuring hardwood floors, granite countertops, and custom raised kitchen cabinets, the open-concept layout is bright and functional. The kitchen is equipped with stainless steel appliances and opens onto a spacious living area with access to a large balcony—ideal for entertaining or unwinding. The primary bedroom and large windows fill the home with natural light. Just a short walk to Whyte Avenue's vibrant restaurants, cafes, boutiques, and nightlife, and only minutes from downtown, the river valley, Mill Creek Ravine, schools, and transit. Whether you're a first-time homebuyer, investor, or looking to downsize, this is a prime opportunity in an unbeatable location. Immediate possession available.

Built in 1981

### Essential Information

|           |           |
|-----------|-----------|
| MLS® #    | E4443277  |
| Price     | \$259,000 |
| Bedrooms  | 2         |
| Bathrooms | 1.00      |



|                |                        |
|----------------|------------------------|
| Full Baths     | 1                      |
| Square Footage | 846                    |
| Acres          | 0.00                   |
| Year Built     | 1981                   |
| Type           | Condo / Townhouse      |
| Sub-Type       | Lowrise Apartment      |
| Style          | Single Level Apartment |
| Status         | Active                 |

### Community Information

|             |                     |
|-------------|---------------------|
| Address     | 201 10003 87 Avenue |
| Area        | Edmonton            |
| Subdivision | Strathcona          |
| City        | Edmonton            |
| County      | ALBERTA             |
| Province    | AB                  |
| Postal Code | T6P 2P1             |

### Amenities

|           |  |
|-----------|--|
| Amenities | On Street Parking, Intercom, Security Door |
| Parking   | Stall                                      |

### Interior

|              |   |
|--------------|---|
| Appliances   | Dishwasher-Built-In, Euro Washer/Dryer Combo, Microwave Hood Fan, Refrigerator, Stove-Countertop Electric, Window Coverings |
| Heating      | Hot Water, Natural Gas  |
| # of Stories | 4   |
| Stories      | 4   |
| Has Basement | Yes   |
| Basement     | See Remarks   |

### Exterior

|                   |   |
|-------------------|---|
| Exterior          | Wood, Brick, Stucco   |
| Exterior Features | Back Lane, Playground Nearby, Public Transportation, Schools, Shopping Nearby |
| Roof              | Unknown   |
| Construction      | Wood, Brick, Stucco   |
| Foundation        | See Remarks   |

### School Information

|            |                    |
|------------|--------------------|
| Elementary | King Edward School |
| Middle     | Allendale School   |
| High       | Strathcona School  |

### **Additional Information**

|                |                 |
|----------------|-----------------|
| Date Listed    | June 19th, 2025 |
| Days on Market | 71              |
| Zoning         | Zone 15         |
| Condo Fee      | \$542           |

DATA IS DEEMED RELIABLE BUT IS NOT GUARANTEED ACCURATE BY THE REALTORS® ASSOCIATION OF EDMONTON. COPYRIGHT 2025 BY THE REALTORS® ASSOCIATION OF EDMONTON. ALL RIGHTS RESERVED. Trademarks are owned or controlled by the Canadian Real Estate Association (CREA) and identify real estate professionals who are members of CREA (REALTOR®, REALTORS®) and/or the quality of services they provide (MLS®, Multiple Listing Service®)

Listing information last updated on August 29th, 2025 at 3:03pm MDT